



Page Street, NW7

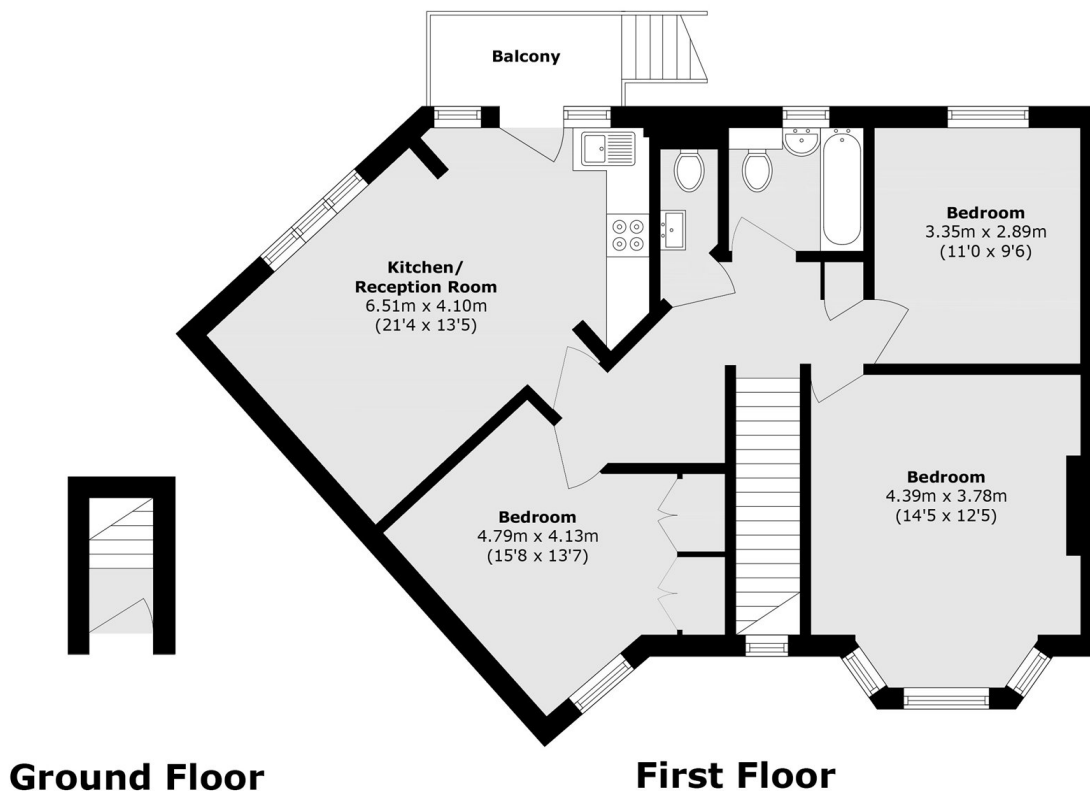
£1,900 Per calendar month

This spacious first-floor maisonette features three double bedrooms, a bright open-plan living room with a modern fitted kitchen, and a contemporary bathroom with an additional separate WC. The property also benefits from a garden, with an optional garage available for £100 per month.

Located between Page Street and Pursley Road in Mill Hill, within walking distance to Copthall Sports Centre, and a short distance to Mill Hill Broadway and Hendon

Features

- Spacious Property
- Recently Refurbished
- Close to Local Amenities
- Section of Garden
- Maisonette
- Good Condition



Total area (approx.): 77.6 sq. m (835.3 sq. ft)
Balcony area (approx.): 3.7 sq. m (39.8 sq. ft)