



Edgewood Mews, N3

£599,000

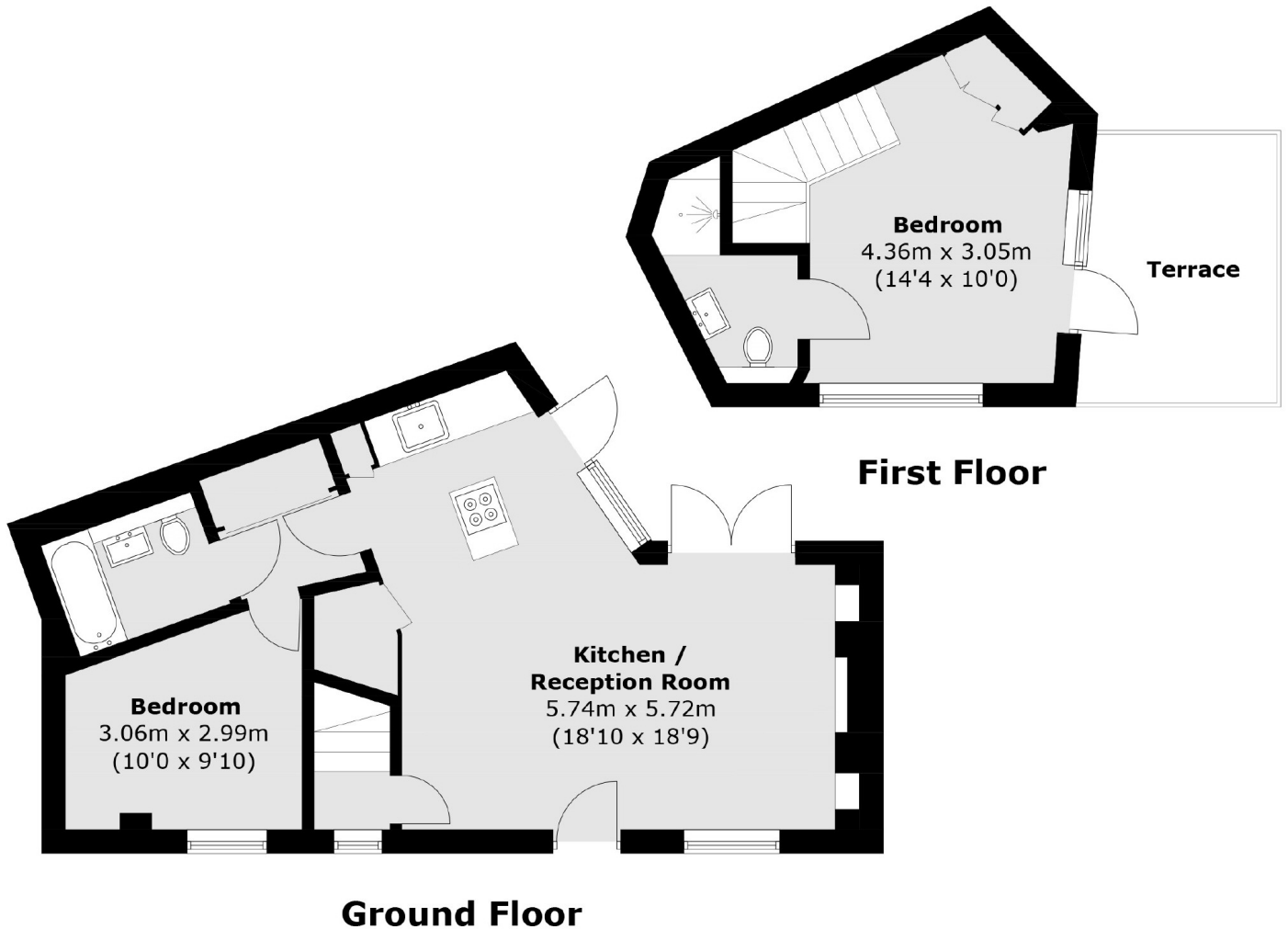
A beautifully presented two bedroom maisonette set within this modern development. Arranged over two floors this property has two bathrooms, an open plan kitchen/living room and two terraces.

Edgewood Mews is a highly sought after residential area for families, known for its excellent transport links, including Finchley Central and Golders Green tube stations, as well as proximity to top-rated local schools and places of worship, which adds to its strong appeal.

Features

- Two Double Bedrooms
- Two Bathrooms
- Maisonette
- Two Private Terraces
- Long Lease
- Finished to a High Standard

Edgewood Mews, London, N3



Total area (approx.): 60.7 sq. m (653.3 sq. ft)
Terrace: 8.0 sq. m (86.1 sq. ft)

Dexters

Finchley
126 Ballards Lane
Finchley
London
Sales
020 8742 4180

Energy Rating: C. We aim to make our particulars both accurate and reliable. However they are not guaranteed; nor do they form part of an offer or contract. If you require clarification on any points then please contact us, especially if you're traveling some distance to view. Please note that appliances and heating systems have not been tested and therefore no warranties can be given as to their good working order.

 **RICS** | Regulated
Estate Agent
and Letting Agent

[dexters.co.uk](https://www.dexters.co.uk)