



High Road, N12

£350,000

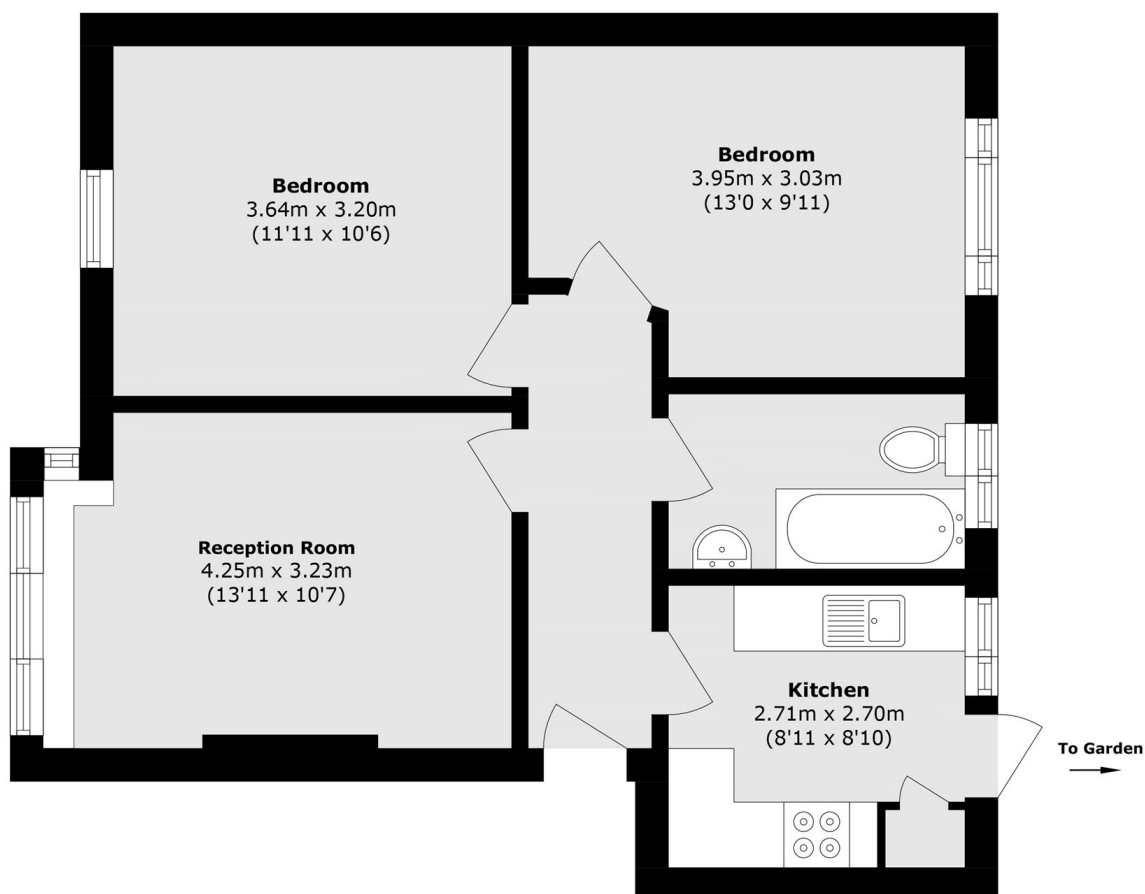
A well-presented two bedroom apartment on the ground floor of a purpose built block. The property has a separate kitchen and direct access to a communal garden. The property also offers a large living space embodying lots of natural light.

Conveniently located a short walk from Victoria Park and Ballards Lane high street with shops and local amenities. The property also benefits from being 0.1 miles away from the Leisure centre with close access to Finchley Central and West Finchley underground stations on the Northern line.

Features

- Two Double Bedrooms
- Ground Floor Flat
- Communal Garden
- Seperate Kitchen
- Purpose Built Block
- Quiet Street

High Road, London, N12



Total area (approx.): 55.4 sq. m (596.3 sq. ft)