



Cornforth Lane, NW7

£365,000

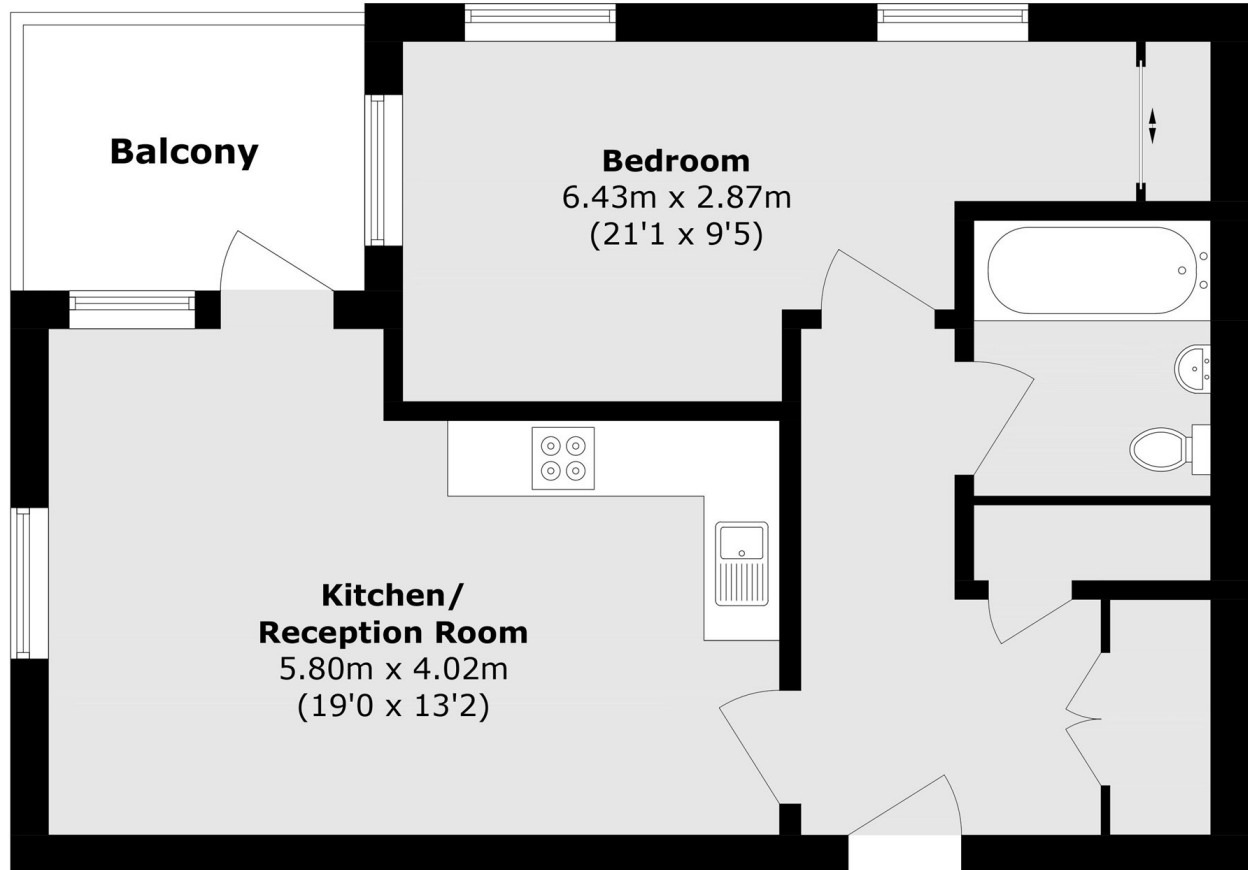
A beautifully presented one bedroom apartment set within the new Ridgeway Views development. This property features a spacious kitchen, a large balcony and access to residents' amenities including a gym, bike storage, on-site restaurant, and secure parking.

Peart House is well located for access to Mill Hill Village, Mill Hill East station, the amenities of Mill Hill's local pubs restaurants and places of worship.

Features

- One Double Bedroom
- Immaculate Condition
- Private Balcony
- Parking Space
- On-site Gym
- Concierge

Cornforth Lane, London, NW7



Total area (approx.): 58.0 sq. m (624.3 sq. ft)

Balcony area (approx.): 5.6 sq. m (60.2 sq. ft)