



## Mountfield Road, N3

### £2,000,000

A beautifully presented end-of-terrace home, ideally located in the heart of Finchley and set on an impressive 5,000 sq ft plot. This impressive home offers five bedrooms, two spacious reception rooms, three bathrooms, and further benefits from off-street parking.

Mountfield Road is well located for access to Church End, Finchley Central underground, the amenities of Ballards Lane, Temple Fortune and local places of worship.

### Features

- Five Bedrooms
- 5,000 Sq Ft Plot
- Four Garages
- End of Terrace
- Victorian Features
- West Facing Garden
- Basement



## Mountfield Road, N3

The ground floor comprises an architect-designed open-plan kitchen and dining area with direct access to a well-maintained garden and patio, suitable for modern family living and entertaining. Further accommodation includes a reception room, study, and utility room.

The first floor offers four well-proportioned bedrooms and family bathroom facilities. Additional benefits include substantial storage space with two lofts, four garages providing extensive parking and storage, and a generous plot with established outdoor areas.

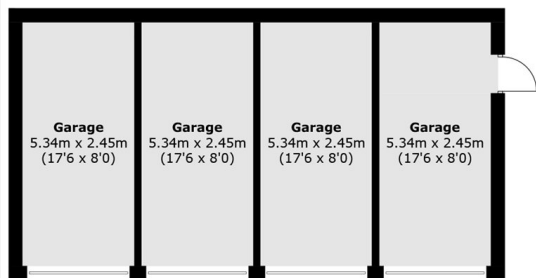
The lower ground floor provides versatile additional space, including a further reception room, a sound-proofed music and recording studio with access to a subterranean patio, and a bedroom, ideal for guest or creative use.

An adaptable and well-proportioned family home in a sought-after residential location.



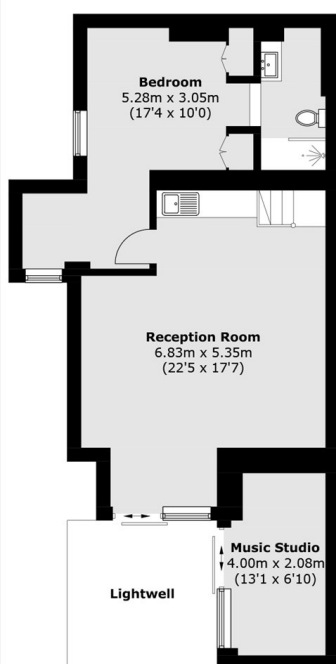


# Mountfield Road, London, N3

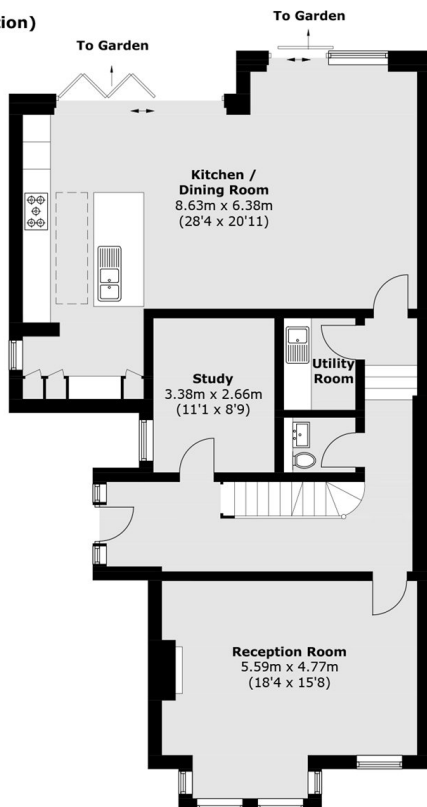


(Not Shown In Actual Location / Orientation)

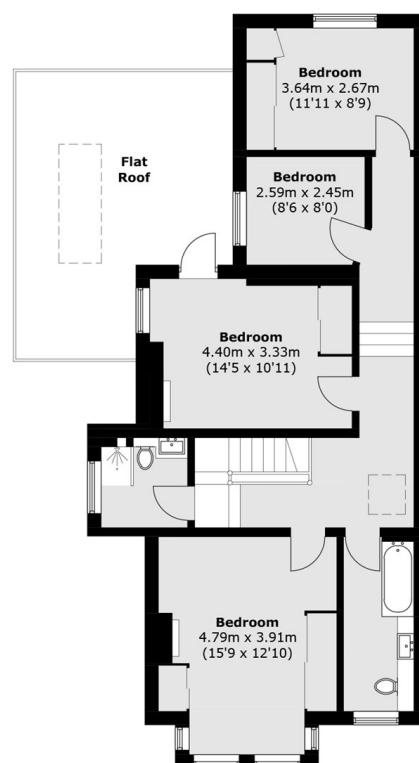
**Ground Floor**



**Lower Ground Floor**



**Ground Floor**



**First Floor**

Total area (approx.): 240.3 sq. m (2586.4 sq. ft)  
Garages : 54.9 sq. m (590.9 sq. ft)  
Music Studio : 8.2 sq. m (88.2 sq. ft)