



## Vinca Mews, NW7

£1,150,000

An immaculately well presented four bedroom house with two reception rooms. The property boasts a large living space flooded with natural light. With off-street parking and a lovely garden, this house is perfect for a family or couple looking to move into the area with no works required.

Vinca Mews is located just 0.3 miles from Mill Hill East Station on the Northern Line and a short walk to Mill Hill Village offering countryside views and walks. Also located a short walk from the local amenities Mill Hill offers such as shops, cafe's and restaurants, and a leisure centre.

### Features

- Four bedrooms
- Four bathrooms
- Two Receptions
- Close to Transport
- Garden
- Off-street parking
- Immaculate condition



## Vinca Mews, NW7

The ground floor comprises a welcoming entrance hall leading to a generous reception room, a contemporary fitted open-plan kitchen, and an integral garage. Both the reception room and kitchen provide direct access to the well-maintained garden, creating an ideal space for indoor-outdoor living and entertaining.

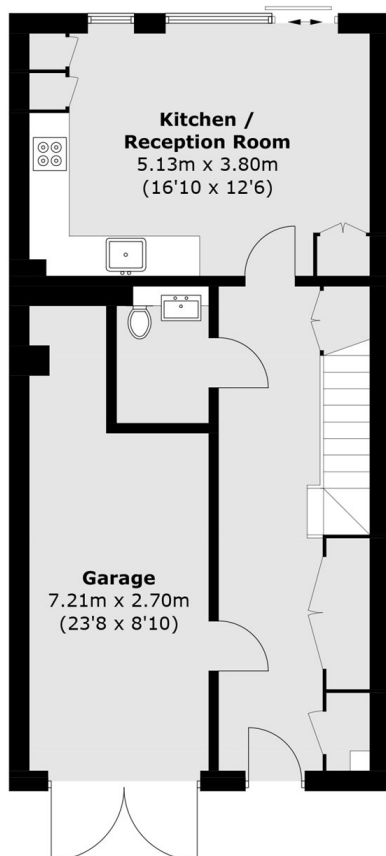
The first floor offers two well-proportioned bedrooms, a stylish family bathroom, and an additional reception room with access to a private balcony, providing flexible use as a further living area, home office, or snug.

The second floor features two spacious double bedrooms, one of which benefits from a modern en-suite bathroom, while the second bedroom is served by a separate bathroom on this level.

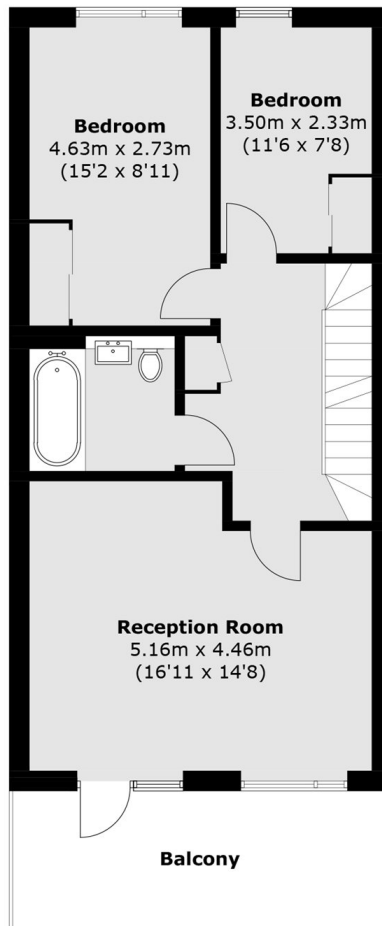




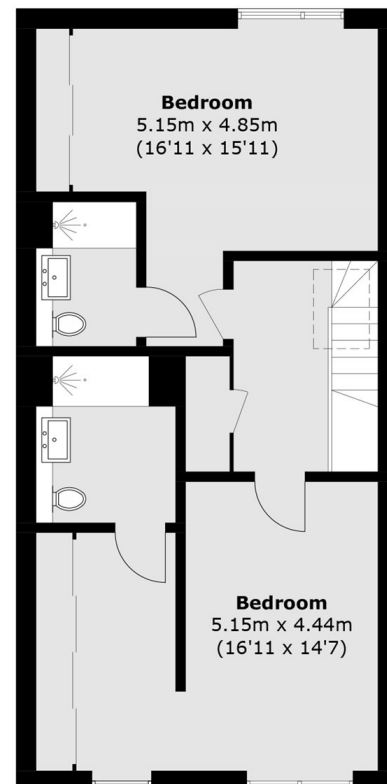
# Vinca Mews, London, NW7



**Ground Floor**



**First Floor**



**Second Floor**

Total area (approx.): 174.9 sq. m (1,882.5 sq. ft)  
(Including Garage)  
Balcony: 11.8 sq. m (127.0 sq. ft)