



Medawar Drive, NW7

£350,000

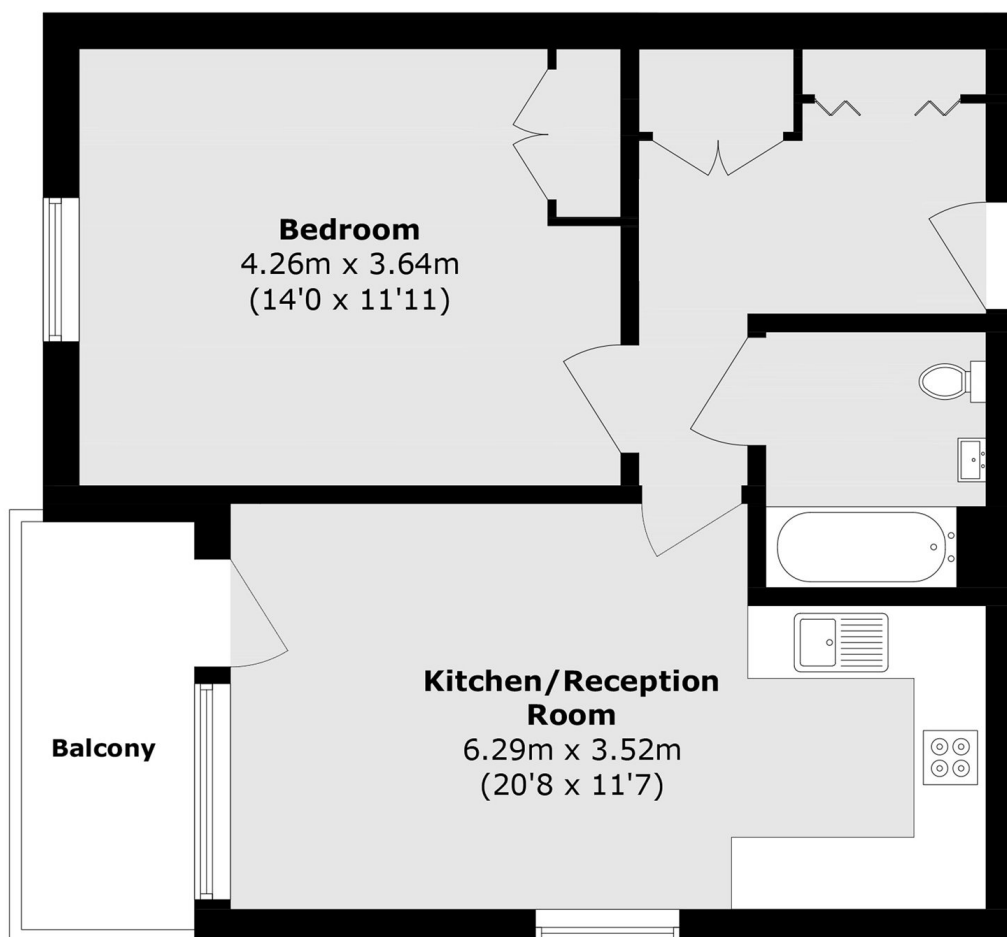
A beautifully presented one bedroom apartment set within this modern development. This property has an open plan kitchen/ reception room, a private terrace and an underground parking space, in addition there is an on-site gym and a secure bike shed.

Medawar Drive is ideally located about a mile from Mill Hill East station and offers picturesque views over Folly Brook. The development falls within the catchment area for well-regarded local schools and is just a short drive from both Finchley Central and Mill Hill Broadway.

Features

- One Double Bedroom
- Modern Development
- Underground Parking Space
- Private Balcony
- Concierge
- Lift

Medawar Drive, London, NW7



Total area (approx.): 50.0 sq. m (538.2 sq. ft)

Balcony area (approx.): 4.8 sq. m (51.6 sq. ft)