



## High Road, N20

£1,900 Per calendar month

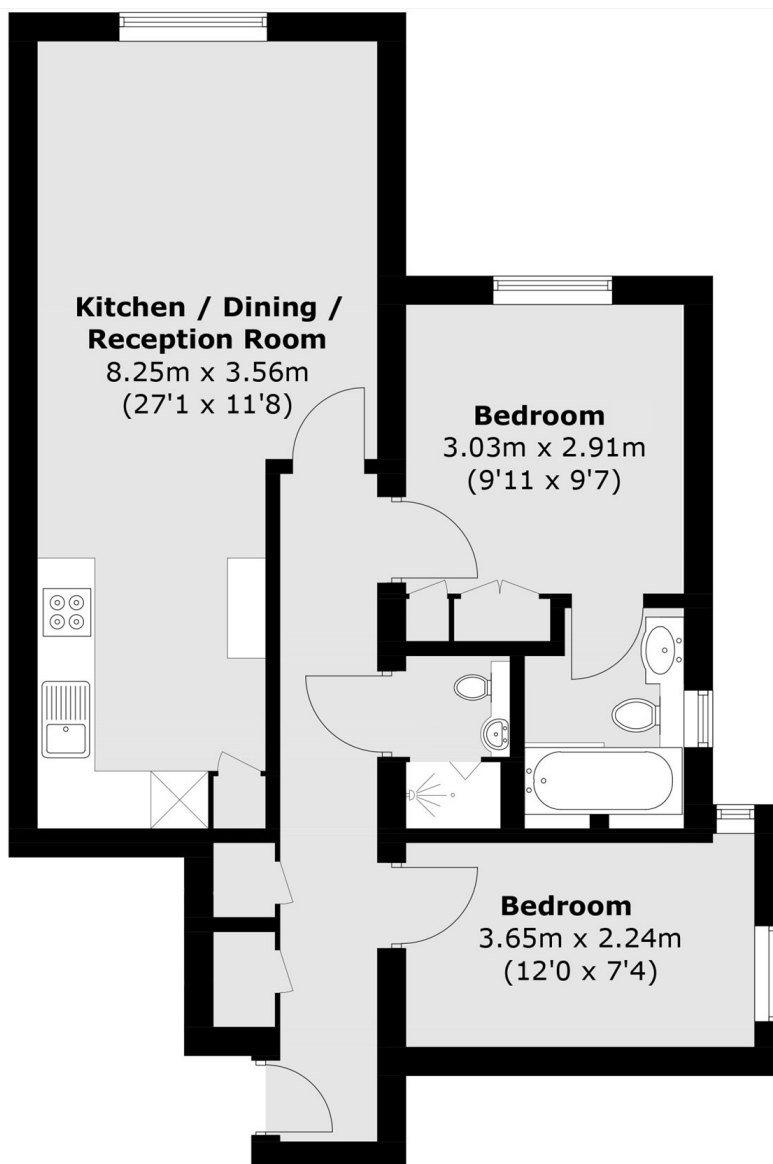
This newly refurbished first-floor apartment offers two generously sized bedrooms and two modern bathrooms, including a sleek en-suite. The home features a spacious open-plan kitchen and living area with wood flooring throughout, a brand-new fitted kitchen with integrated appliances, newly installed bathroom suites, and fitted wardrobes in the principal bedroom. A dedicated parking space adds further convenience to this well-presented property.

The apartment is located within easy walking distance of Totteridge & Whetstone Underground Station on the Northern Line, providing direct access into Central London. Whetstone High Street is nearby and offers a lively mix of shops, cafés, restaurants, and everyday amenities, including well-known retailers. The area is also well served by local bus routes and Oakleigh Park mainline station, making it an excellent location for commuters.

### Features

- Two Bedrooms
- Two Bathrooms
- One Reception
- Parking
- Communal Parking
- First Floor

# High Road, London, N20



## First Floor

Total area (approx.): 60.8 sq. m (654.4 sq. ft)