



## Lancaster Road, EN4

£2,000 Per calendar month







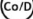
Large two bedroom ground floor apartment. The property benefits from two double bedroom, one with ensuite an additional bathroom and open plan living room kitchen. The property also has an allocated parking space

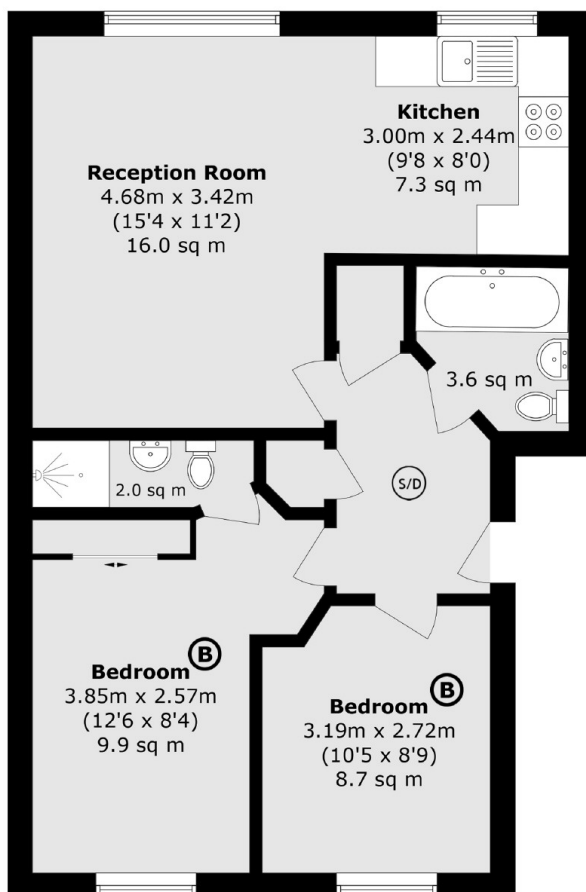
The property is close to New Barnet overground station and Sainsburys supermarket

### Features

- Two Bedrooms
- Two Bathrooms
- Ground Floor
- Allocated Parking
- Part Furnished

# Lancaster Road, Barnet, EN4

-  Smoke Detector
-  Fire Blanket
-  Fire Exit
-  Fire Extinguisher
-  Heat Detector
-  Boiler
-  Carbon Monoxide Detector



Total area (approx.): 59.0 sq. m (635.1 sq. ft)

**National Guidelines (may differ depending on Local Authority).**

- E) 4.6 square meters > = no one**
- D) 4.6 - 6.5 square meters = 1/2 person (Child up to 10 years)**
- C) 6.5 - 8.4 square meters = 1 person**
- B) 8.4 - 10.2 square meters = 1 1/2 people**
- A) 10.2 meters < = 2 people**