



Porch Way, N20

£1,725 Per calendar month

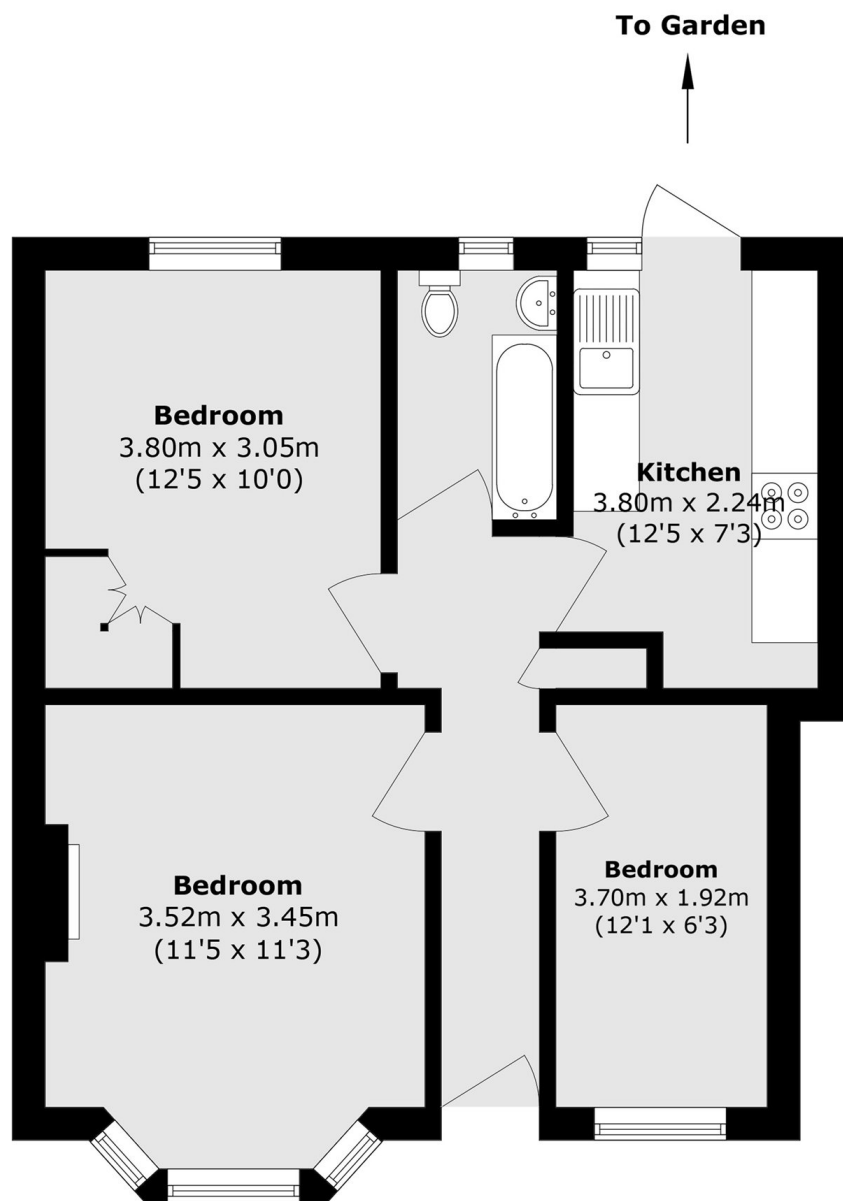
This light-filled ground-floor apartment offers two well-sized bedrooms and a spacious living area arranged in a practical layout. Generous windows throughout the property allow for an abundance of natural daylight, enhancing the bright and airy feel of the home. The accommodation is well balanced, providing comfortable and versatile living space.

Located in the sought-after N20 area, the flat is well positioned for a range of local shops, everyday amenities, and transport connections. Nearby green spaces add to the appeal, offering opportunities for outdoor leisure. This convenient North London location is ideal for professionals or couples seeking easy access and ground-floor living.

Features

- 2 Bedrooms
- 1 Reception
- 1 Bathroom
- Own Entrance
- Garden
- Modern

Porch Way, London, N20



Total area (approx.): 52.7 sq. m (567.3 sq. ft)