



## Cornforth Lane, NW7

### £675,000

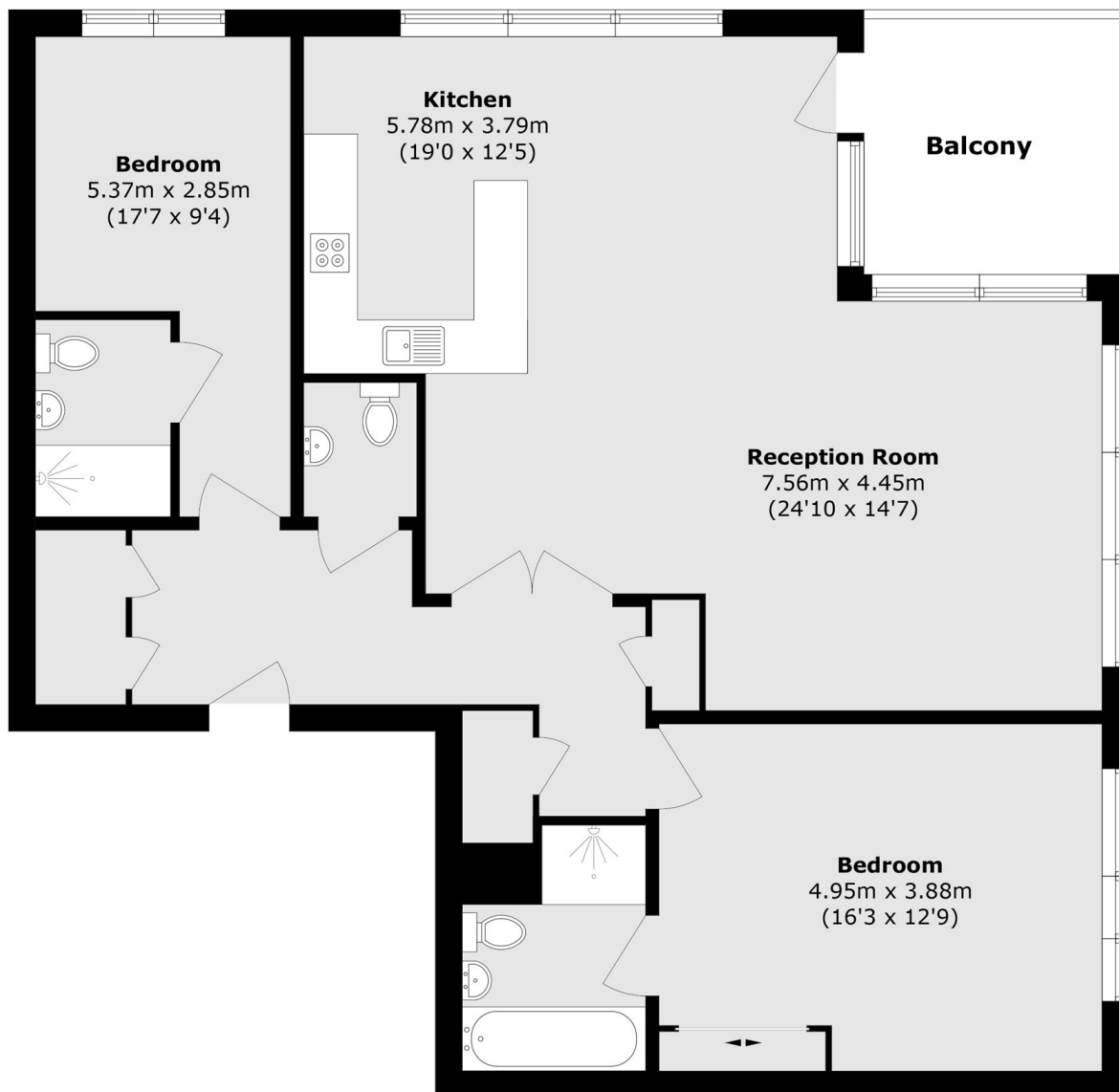
Spanning at nearly 1,200sqft is this stunning two bedroom apartment set within a modern development. With an on-site gym, concierge, an open plan kitchen/ reception room with floor to ceiling windows and a private balcony. This apartment also has wrap-a-round views of Totteridge Valleys and is remarkably bright. The property also includes two private parking spaces.

Cornforth Lane is located about a mile from Mill Hill East station and offers picturesque views over Folly Brook. The development falls within the catchment area for well-regarded local schools and is just a short drive from both Finchley Central and Mill Hill Broadway. Both areas offer a variety of restaurants, coffee shops and supermarkets.

### Features

- Two Double Bedrooms
- Open Plan
- Gym
- Concierge
- Stunning Views
- Underground Parking
- Lots of Natural Light

# Cornforth Lane, London, NW7



Total area (approx.): 109.5 sq. m (1178.6 sq. ft)

Balcony area (approx.): 8.7 sq. m (93.6 sq. ft)

## Dexters

Finchley  
126 Ballards Lane  
Finchley  
London  
Sales  
020 8742 4180

Energy Rating: B. We aim to make our particulars both accurate and reliable. However they are not guaranteed; nor do they form part of an offer or contract. If you require clarification on any points then please contact us, especially if you're traveling some distance to view. Please note that appliances and heating systems have not been tested and therefore no warranties can be given as to their good working order.

 **RICS** | Regulated  
Estate Agent  
and Letting Agent

[dexters.co.uk](https://www.dexters.co.uk)