



Balchier Road, SE22
£1,100,000

Dexters



Balchier Road, SE22

Set on one of East Dulwich's most peaceful residential streets, this double-fronted Victorian house offers a rare chance to secure a property of stature in SE22. Combining period charm with substantial proportions, it is presented chain free, allowing a seamless purchase for those seeking a refined family home.

The entire ground floor is dedicated to a generous living space, with an impressive open plan kitchen, an entertainment and dining room as well as a sunny South West Facing Patio. Three double bedrooms and a large family bathroom are arranged over the spacious first floor and the top floor, a loft conversion, hosts a master bedroom/study which extend across the whole floor.

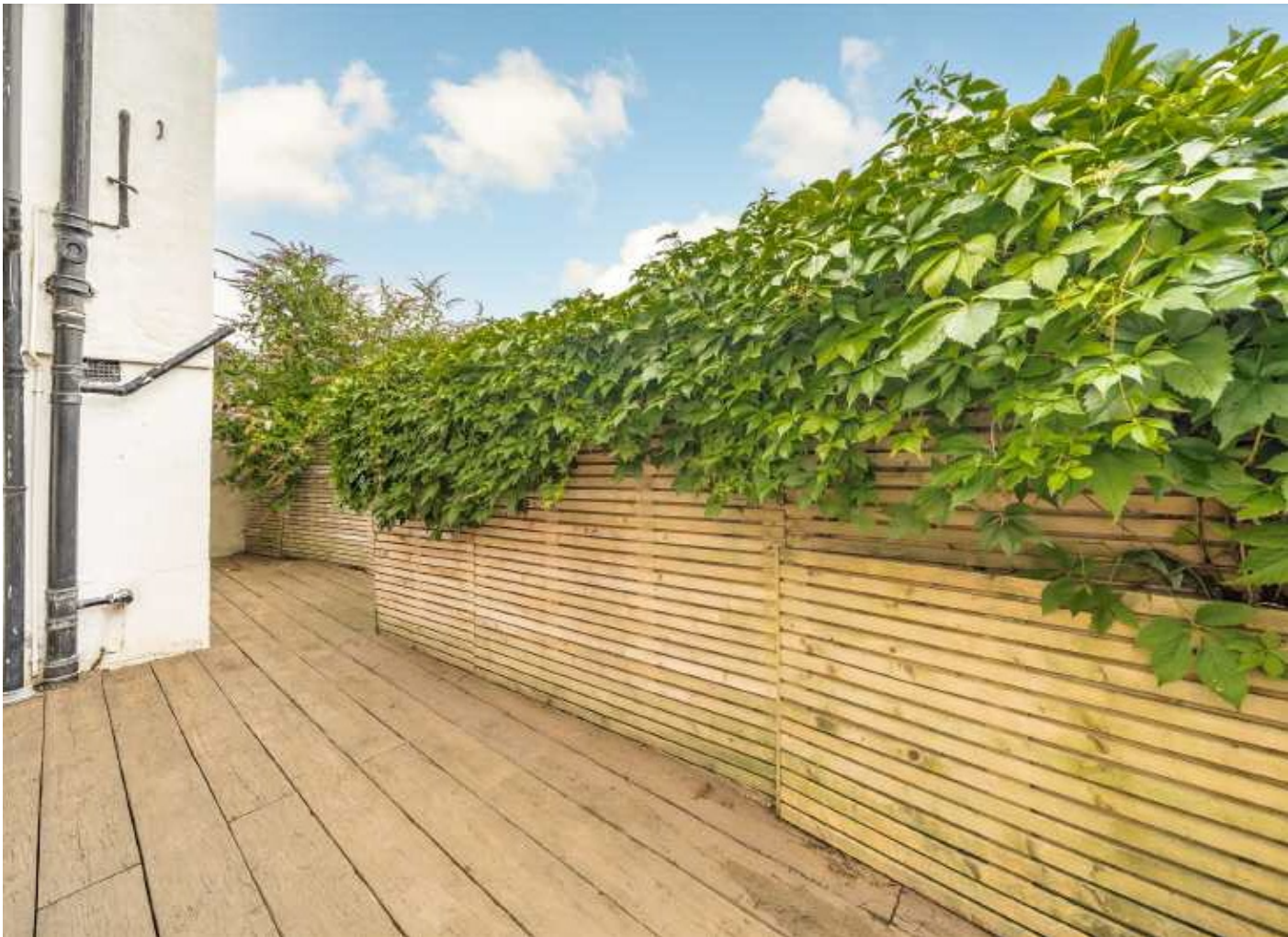
Balchier Road enjoys a tranquil setting, while remaining within easy reach of Dulwich Village, Lordship Lane, and the open expanses of Dulwich and Peckham Rye Parks. Renowned schools, boutique shops, and cafés are nearby, and swift transport connections place London Bridge and the West End within easy reach.

Features

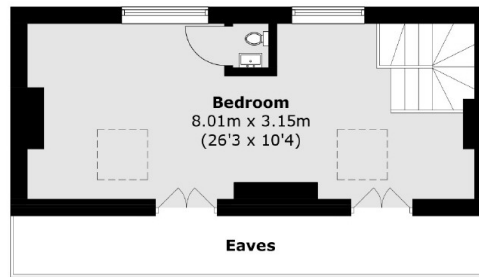
- Victorian
- Double Fronted
- Prime Location
- Large Living Space
- Loft Converted
- Residential Street







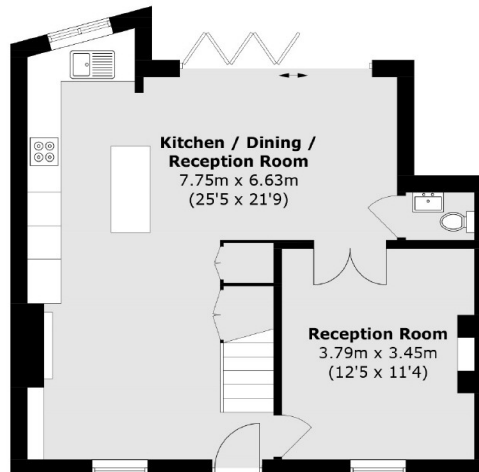
Balchier Road,
London, SE22



Second Floor



First Floor



Ground Floor

Total area (approx.): 131.9 sq. m (1,419.6 sq. ft)
(Excluding Eaves)

Dexters

East Dulwich
98 Grove Vale
London
SE22 8DR
Sales
020 8742 4142

Energy Rating: C. We aim to make our particulars both accurate and reliable. However they are not guaranteed; nor do they form part of an offer or contract. If you require clarification on any points then please contact us, especially if you're traveling some distance to view. Please note that appliances and heating systems have not been tested and therefore no warranties can be given as to their good working order.

 **RICS** | Regulated
Estate Agent
and Letting Agent

dexters.co.uk