



## Deventer Crescent, SE22

### £650,000

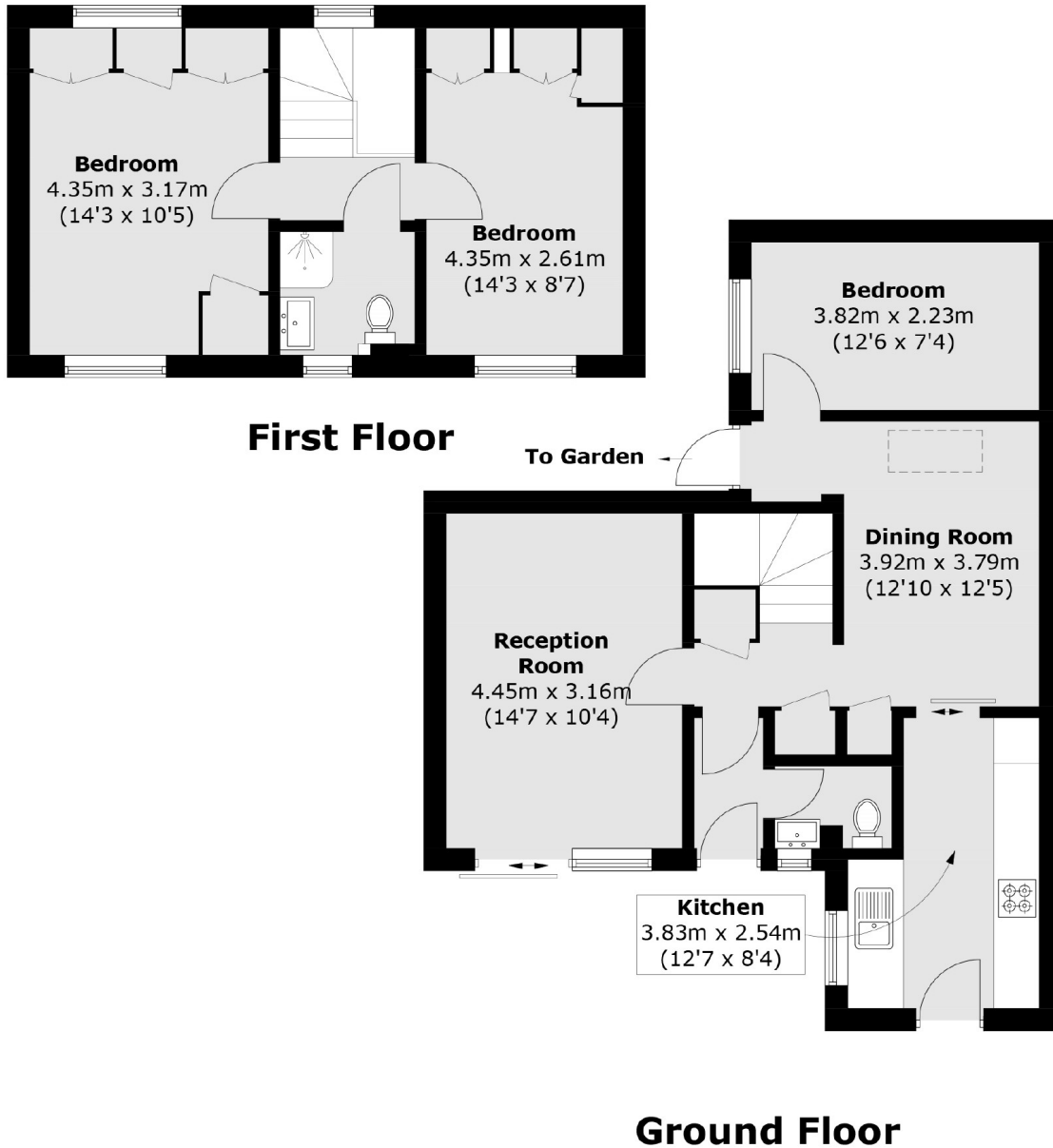
A three bedroom house set within a residential crescent, offering well maintained interiors and the advantage of both front and rear gardens. The property combines practical family living with a sought after East Dulwich address.

Deventer Crescent is quietly positioned yet within easy reach of Lordship Lane, known for its independent shops, restaurants and cafés. Transport links are convenient, with East Dulwich and North Dulwich stations providing swift connections to London Bridge, supported by local bus routes to the City and West End.

### Features

- Excellent Location
- Close to Transport Links
- Front and Rear Garden
- Good Conditions Throughout
- Outstanding Local Schools
- Chain Free

# Deventer Crescent, London, SE22



Total area (approx.): 89 sq. m (958.0 sq. ft)