



Fountain Drive, SE19

£325,000

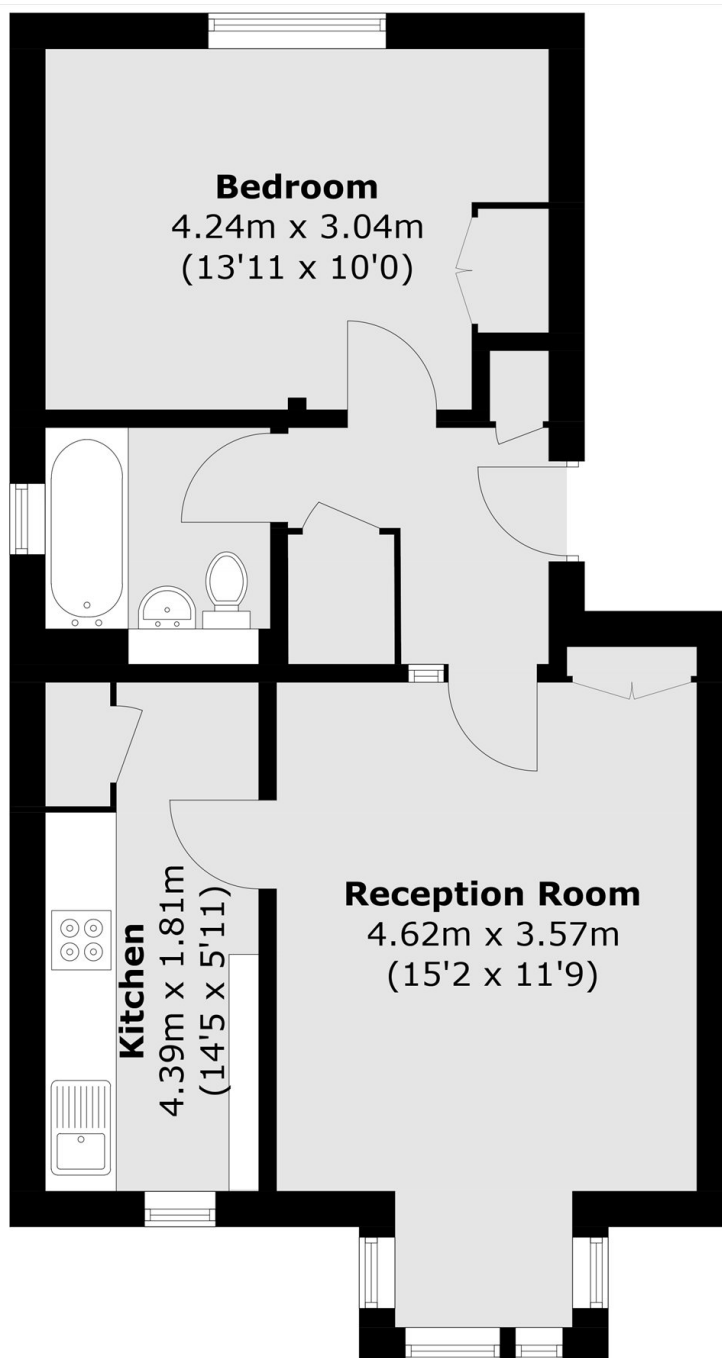
Located within a small private development this purpose built apartment is sold with no onward chain. It offers a good-size double bedroom, bright reception with plenty of space for socialising or relaxing, fitted kitchen and bathroom/WC. With the added benefit of a communal garden and residents parking, it presents the perfect step on to the property ladder.

Hogarth Court is a sought after development situated by Crystal Palace Park and perfectly placed for many of the areas amenities, including independent restaurants, local shops and bars. The nearest train station is Gipsy Hill with services to Victoria, London Bridge and Crystal Palace. Sydenham Hill station is also within reach with frequent trains to Victoria.

Features

- Naturally Bright
- Over 500 Sq Ft
- Convenient Location
- No Onward Chain
- Residents Parking
- Communal Garden

Fountain Drive, London, SE19



Total area (approx.): 48.6 sq. m (523 sq. ft)

Dexters

East Dulwich
98 Grove Vale
London
SE22 8DR
Sales
020 8742 4142

Energy Rating: E. We aim to make our particulars both accurate and reliable. However they are not guaranteed; nor do they form part of an offer or contract. If you require clarification on any points then please contact us, especially if you're traveling some distance to view. Please note that appliances and heating systems have not been tested and therefore no warranties can be given as to their good working order.

 **RICS** | Regulated
Estate Agent
and Letting Agent

[dexters.co.uk](https://www.dexters.co.uk)