



Bassano Street, SE22

£375,000

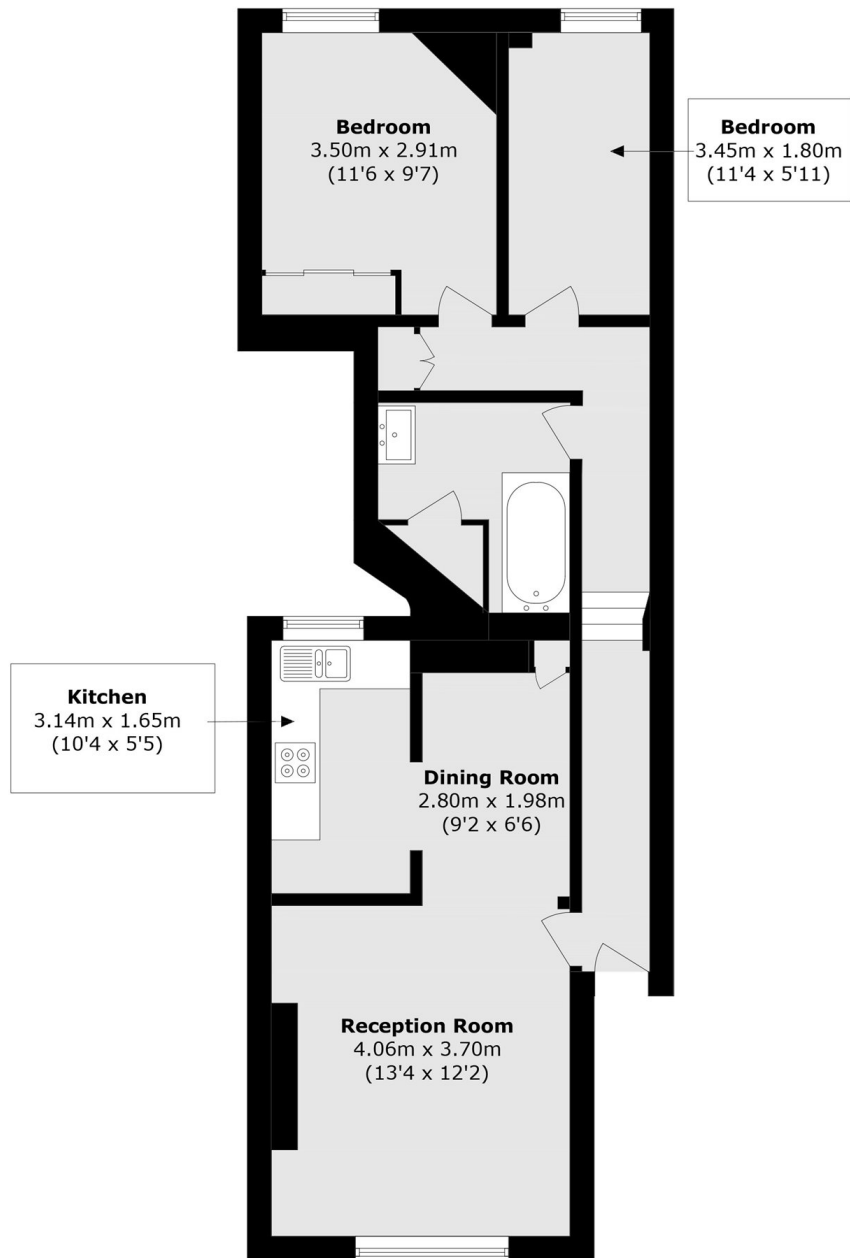
A two bedroom flat in a excellent location just off of Lordship Lane that is being sold with no onward chain. The flat has 655 square feet of living space and there is free on-street parking.

Bassano Street is ultra-convenient being within easy reach to the shops, bars and restaurants of Lordship Lane. East Dulwich mainline provides frequent rail links to London Bridge. The green open spaces of Dulwich and Peckham Rye Parks are just a short walk away and there are a number of outstanding schools nearby.

Features

- Excellent Location
- No Onward Chain
- Two Bedrooms
- 655 Square Foot
- Ready To Move In
- Close To Transport Links

Bassano Street, LONDON, SE22



Total area (approx.): 60.9 sq. m (655.5 sq. ft)