



Lordship Lane, SE22

£550,000

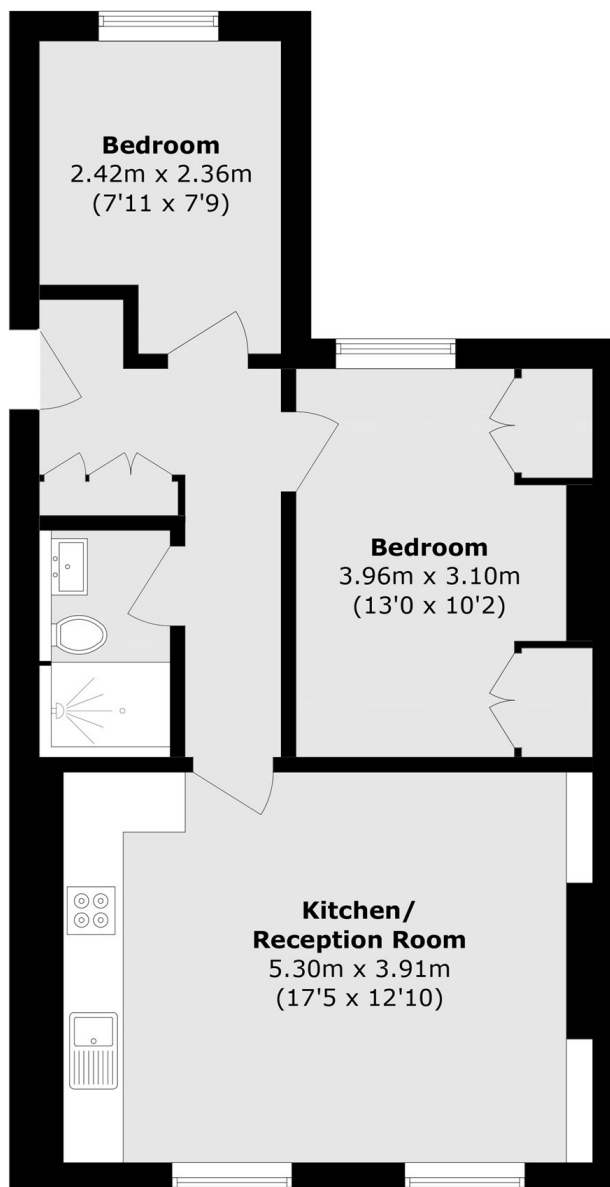
Set on the top floor of a handsome period building, this beautifully finished two bedroom apartment offers elevated views, a large private garden, excellent natural light and a high specification finish throughout.

Positioned on Lordship Lane, the property is perfectly placed for the independent shops, cafes and restaurants of East Dulwich, as well as the green open spaces of Peckham Rye Common. Excellent transport links are available nearby, including Peckham Rye and East Dulwich Stations offering fast connections into central London.

Features

- Two Bedroom Apartment
- Top Floor
- Victorian Conversion
- Large Private Garden
- Potential To Extend STPP
- Amazing Views

Lordship Lane,
London, SE22



Total area (approx.): 51.9 sq. m (558.6 sq. ft)

Dexters

Peckham Rye
2 Barry Parade
Barry Road
London
Sales
020 8742 4146

Energy Rating: D. We aim to make our particulars both accurate and reliable. However they are not guaranteed; nor do they form part of an offer or contract. If you require clarification on any points then please contact us, especially if you're traveling some distance to view. Please note that appliances and heating systems have not been tested and therefore no warranties can be given as to their good working order.

 **RICS** | Regulated
Estate Agent
and Letting Agent

[dexters.co.uk](https://www.dexters.co.uk)