



Therapia Road, SE22

£395,000

A one bedroom split-level period conversion flat located on the highly sought-after Therapia Road in East Dulwich.

Therapia Road sits within a leafy pocket of East Dulwich, a short distance from Lordship Lane's mix of independent shops, restaurants and cafés. Transport connections are convenient, with Honor Oak station providing swift links into London Bridge and Canary Wharf, alongside nearby bus routes serving the City and West End.

Features

- Share Of Freehold
- Chain Free
- Private Garden
- Split Level
- Ready To Move In
- Period Conversion

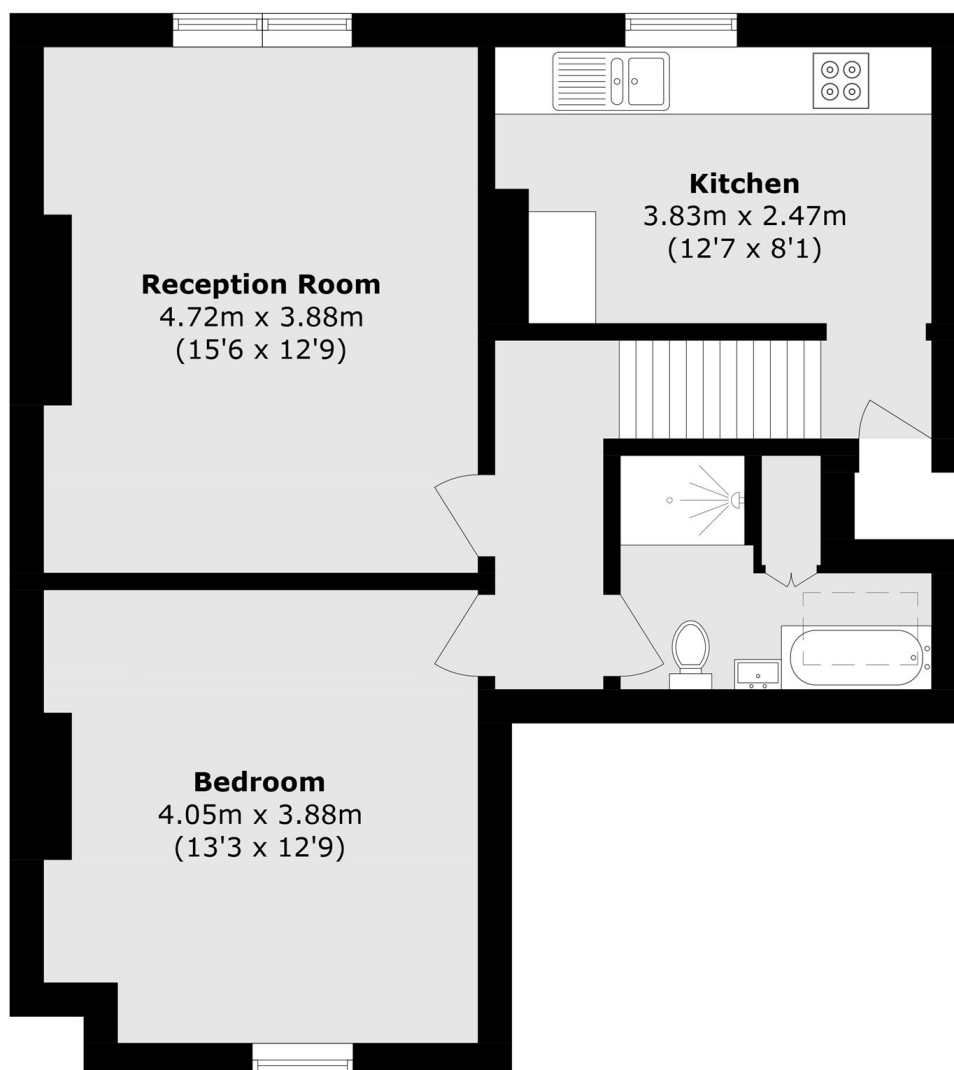


Therapia Road, SE22

Offering an impressive 604 sq ft of internal living space and off-street parking. This charming home is offered chain free and with a share of the freehold, as well as having access to a private landscaped garden.



Therapia Road, London, SE22



Total area (approx.): 56.2 sq. m (604.9 sq. ft)