



Belvoir Road, SE22

£650,000

Located on the first floor of this charming Victorian building, a three bedroom maisonette on Belvoir Road SE22. The property benefits from 894 square feet of living space as well as having direct access to a shared garden.

Belvoir Road is quietly and securely tucked away around the corner from Lordship Lane, perfectly placed to enjoy the vibrant mix of bars and restaurants. The property is surrounded by green spaces such as Camberwell Old Cemetery, Dulwich Park and The Horniman Gardens. With excellent transport links, West Dulwich, East Dulwich and Forest Hill stations are only a short bus ride or walk away providing frequent rail services to London.

Features

- First Floor Maisonette
- Three Bedrooms
- 894sqft
- Shared Garden
- Great Local Community
- Chain Free

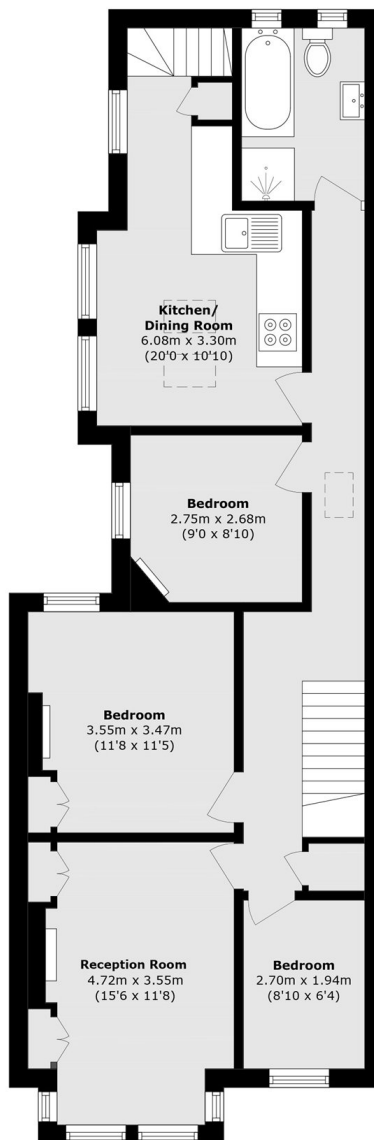
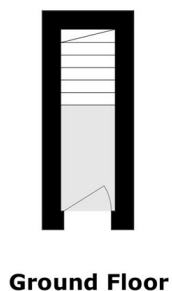
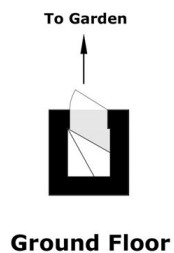


Belvoir Road, SE22

This delightful first-floor maisonette seamlessly combines space, comfort, and convenience. Boasting three bedrooms, it offers plenty of room for family living or working from home. The eat-in kitchen is spacious and well-appointed, featuring ample cupboard space, and provides direct access via steps to a shared garden. The separate living room is filled with natural light, highlighted by a charming bay window. The bathroom features both a bathtub and a separate walk in shower, offering a luxurious touch.



Belvoir Road, London, SE22



First Floor

Total area (approx.): 83.1 sq. m (894.4 sq. ft)

Dexters

East Dulwich
98 Grove Vale
London
SE22 8DR
Sales
020 8742 4142

Energy Rating: D. We aim to make our particulars both accurate and reliable. However they are not guaranteed; nor do they form part of an offer or contract. If you require clarification on any points then please contact us, especially if you're traveling some distance to view. Please note that appliances and heating systems have not been tested and therefore no warranties can be given as to their good working order.



Regulated
Estate Agent
and Letting Agent

dexters.co.uk