



## Rosendale Road, SE21

£500,000

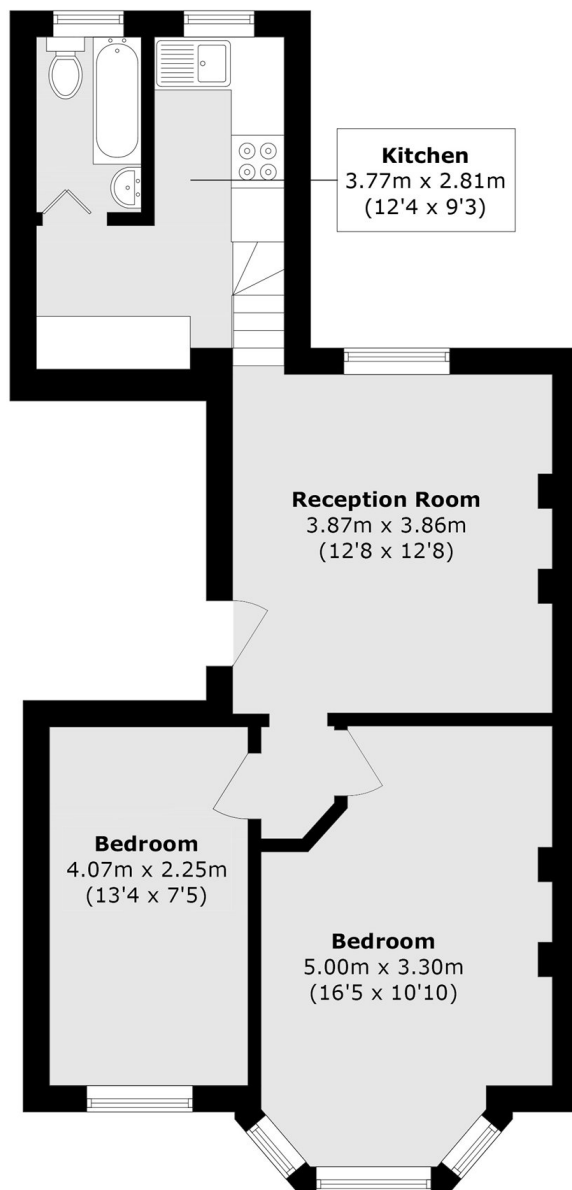
A two double bedroom flat on the first floor of a Victorian building that has been recently refurbished. The flat is being sold with no onward chain and comes with a private garden space which the building is currently using an incredibly spacious shared garden.

Perfectly located just 12 minutes' walk from West Dulwich station, with direct trains to London Victoria in around 12 minutes, and surrounded by a vibrant selection of shops, cafes, and restaurants. Additional lifestyle options can be found in nearby West Norwood, Crystal Palace, Herne Hill, Dulwich Village, and East Dulwich.

### Features

- Two Double Bedrooms
- No Onward Chain
- First Floor Flat
- Prime Location
- Garden
- Recently Refurbished

Rosendale Road,  
London, SE21



Total area (approx.): 50.4 sq. m (542.5 sq. ft)