



Oakhurst Grove, SE22

£485,000

Set on the first floor of an attractive Victorian house on Oakhurst Grove, this well presented two bedroom conversion offers a bright and well balanced layout extending to approximately 554 sq ft.

The property comprises a spacious reception room with a bay window, a separate kitchen, two bedrooms and a modern bathroom. The principal bedroom is well proportioned, while the second bedroom lends itself well as a guest room or study. The overall finish is clean and contemporary, with good natural light throughout.

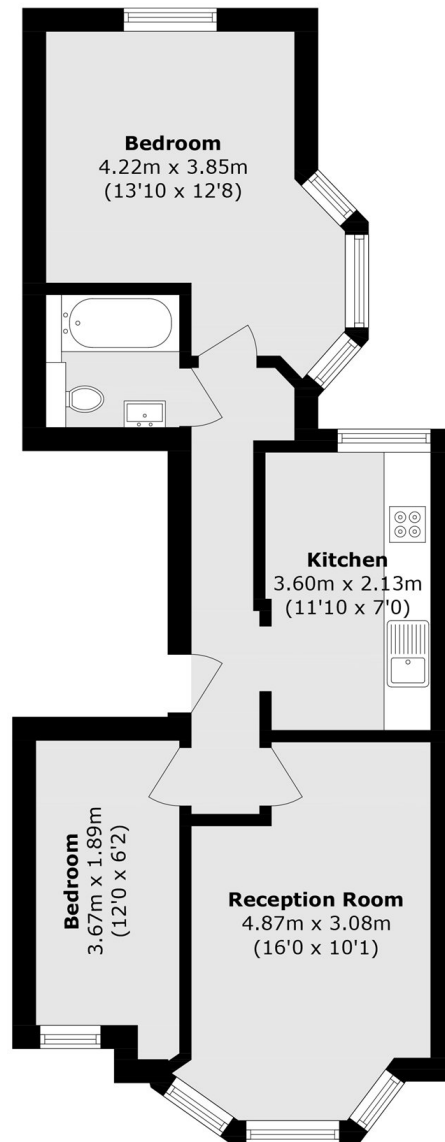
Further benefits include a share of freehold and the property is offered chain free.

Oakhurst Grove is a quiet residential street in East Dulwich, well positioned for the independent shops, cafés and restaurants of Lordship Lane, with excellent transport links nearby.

Features

Two Bedroom Apartment
Victorian Conversion
Share of Freehold
Chain Free
Approx 554 Square Foot
Prime SE22 Location

Oakhurst Grove, London, SE22



Total area (approx.): 51.5 sq. m (554.3 sq. ft)