



Melford Road, SE22

£300,000

Set within a well maintained purpose built development on Melford Road, this bright one bedroom apartment offers well proportioned living space and a practical layout throughout.

The property comprises a generous reception room with ample space to dine and relax, a separate fitted kitchen, a well sized tranquil double bedroom with lovely garden views and a bathroom. The flat is naturally bright with large windows and offers a great opportunity for a first time buyer or investor.

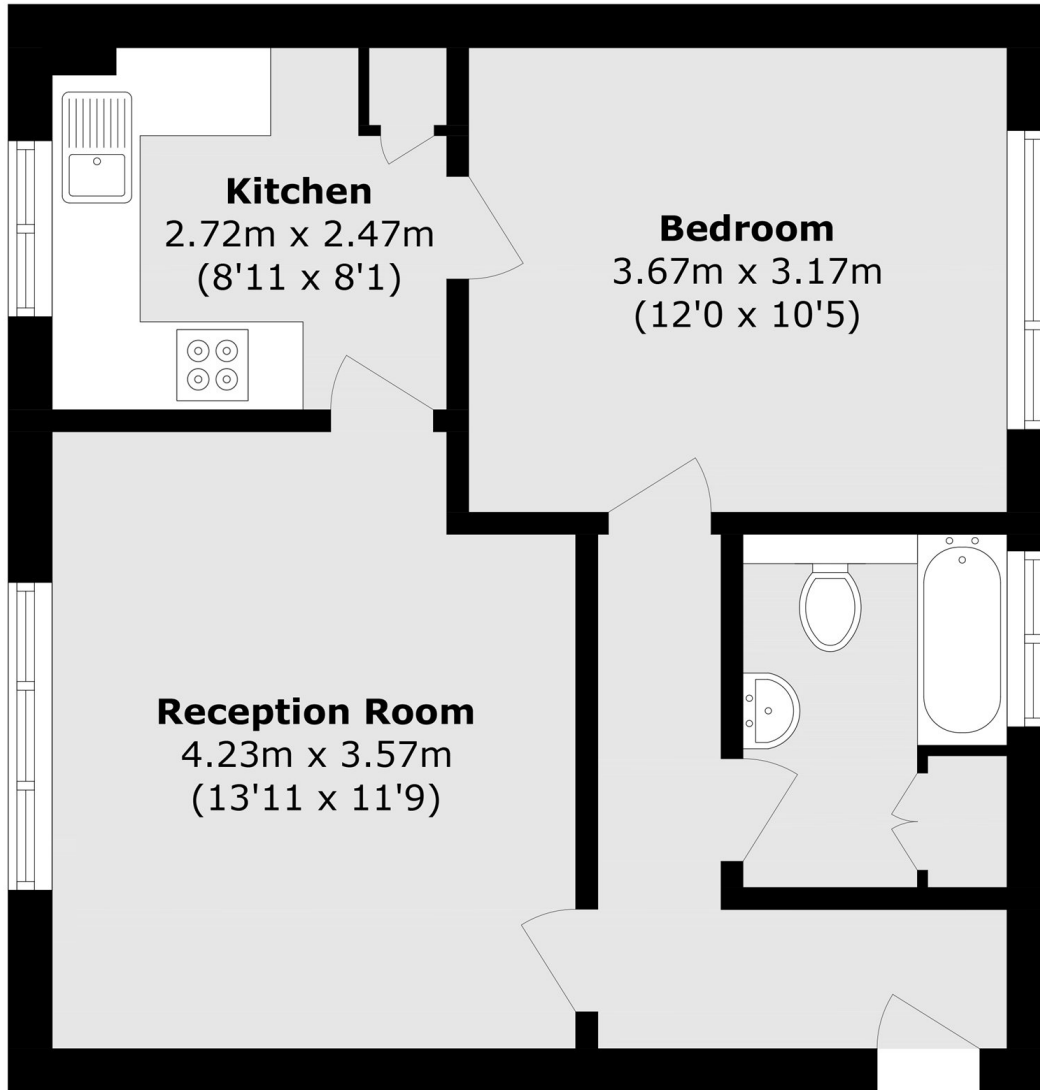
Melford Road is superbly positioned between two of East Dulwich's most sought after residential roads, Underhill Road and Wood Vale.

Deans Court is ideally located for the open green spaces of Peckham Rye Park and Dulwich Park, with Lordship Lane close by offering a wide selection of independent shops, cafes and restaurants. Forest Hill Road is a 15 minutes walk or 5 minutes bus ride, providing excellent connections to Central London and South England.

Features

One Bedroom Apartment
477.9 square foot
Chain Free
Communal Garden
Close to Lordship Lane
Recently Refurbished

**Melford Road,
LONDON, SE22**



Total area (approx.): 44.4 sq. m (477.9 sq. ft)