



East Dulwich Road, SE22

£525,000

Set on the top floor of an attractive Victorian conversion, this beautifully presented split level apartment offers 720 sq ft of well balanced living space.

East Dulwich Road is ideally positioned between Peckham and East Dulwich, offering an excellent selection of independent shops, cafes and restaurants, alongside strong transport links into central London.

Features

Two Double Bedrooms
Split Level Apartment
Victorian Conversion
720 square foot
Top Floor
Beautifully Presented

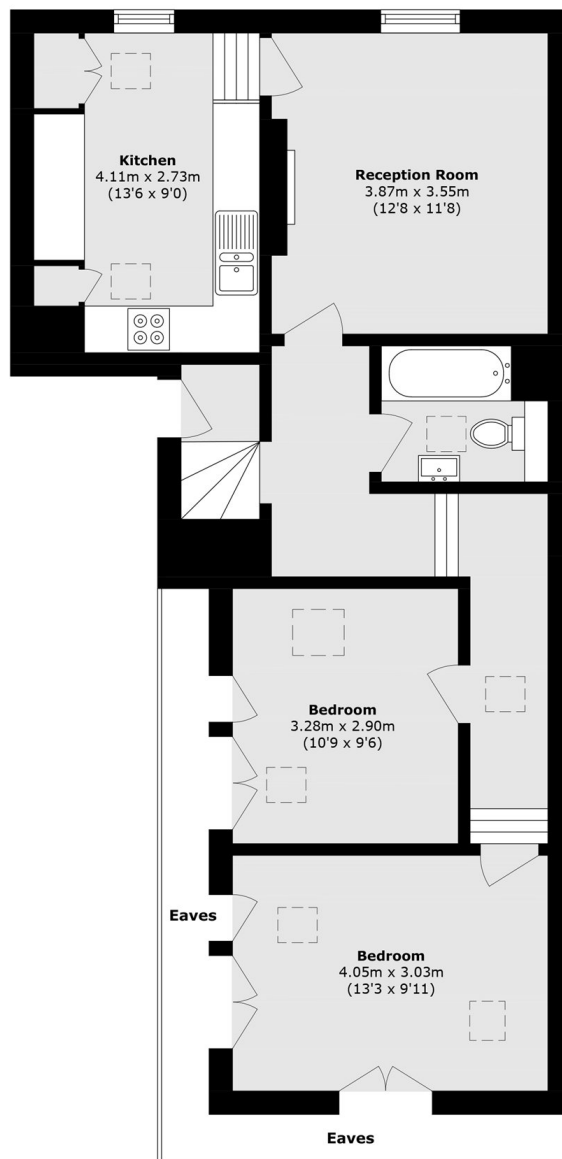


East Dulwich Road, SE22

The property comprises a bright reception room with space to dine, a separate modern kitchen, two well proportioned double bedrooms and a contemporary bathroom. The split level layout creates a natural separation between living and sleeping areas, enhancing both privacy and flow.



East Dulwich Road, London, SE22



Total area (approx.): 66.9 sq. m (720.1 sq. ft)
(Excluding Eaves)