



## West Grove, SE10

£550,000

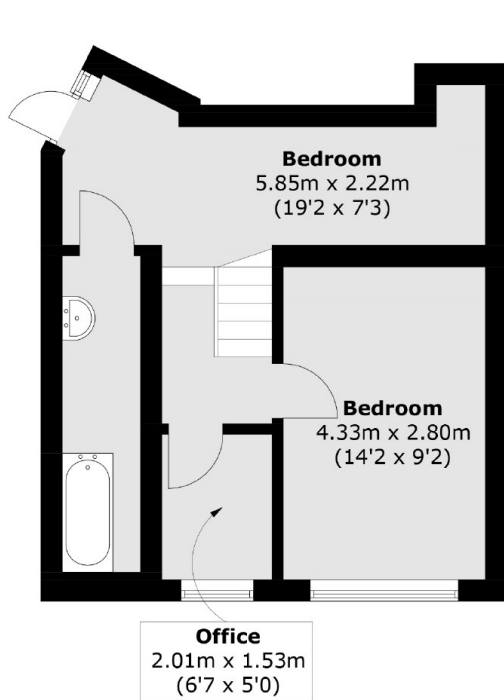
A unique two/three bedroom freehold mezzanine that is unmodernised which is a fantastic opportunity to put your own stamp on the property and further benefits from being situated in a sought after location West Greenwich.

West Grove is a quiet residential road in West Greenwich offering easy access to both Greenwich Town Centre and Blackheath Village. Greenwich Mainline and DLR Station is a short walk away offering a swift and direct commute to Canary Wharf, The City and Kings Cross. The open green spaces of Greenwich Park and Blackheath are moments away as are the area's shops, bars, restaurants and all the historical places of interest such as the National Maritime Museum, Royal Observatory and the Royal Naval College.

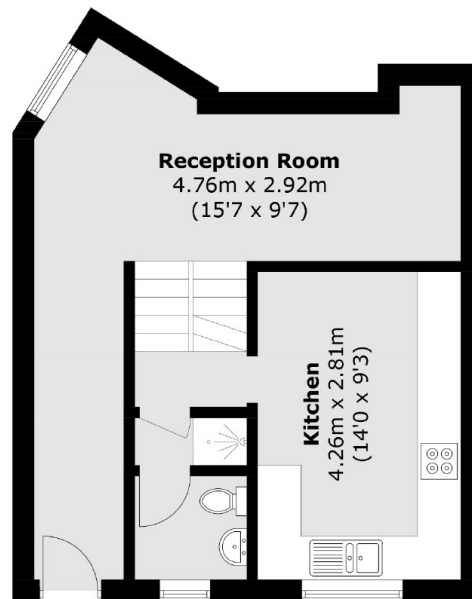
### Features

Freehold  
Unmodernised  
Just Over 1000 sq ft  
Sought After Location  
Period Property  
Two Bathrooms

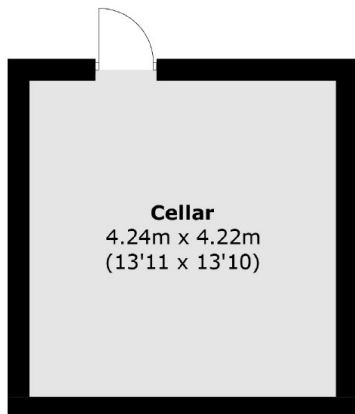
# West Grove, London, SE10



**Lower Ground Floor**



**Ground Floor**



**Cellar**

Total area (approx.): 77.4 sq. m (833.1 sq. ft)  
Cellar: 17.8 sq. m (191.6 sq. ft)