



Collington Street, SE10

£600,000

A beautifully presented two double bedroom, two bathroom, split level modern flat in a sought after location with a private balcony and communal garden.

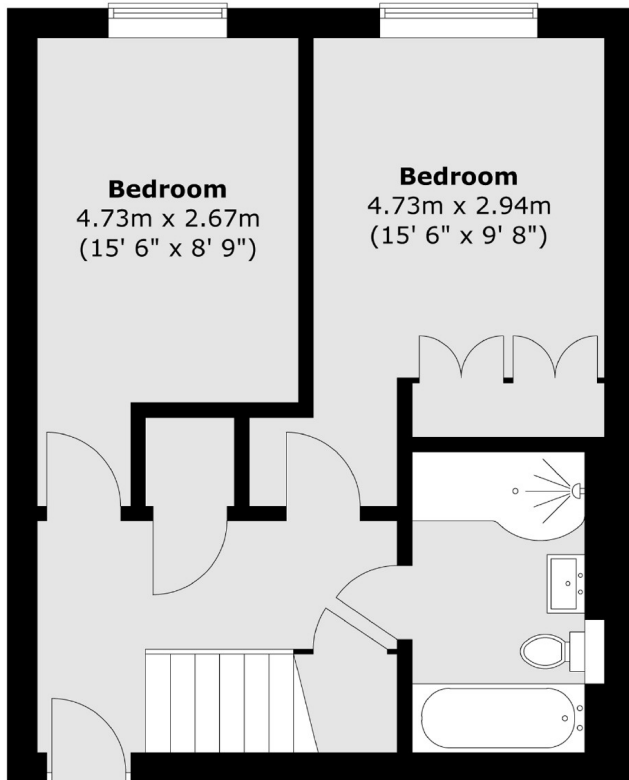
This flat is in an excellent location, just a short distance from many amenities and local attractions. Central Greenwich is home to a number of wonderful bars, cafes and restaurants as well as the popular Greenwich Market and a selection of independent shops. There are good local transport options, including Maze Hill main line station with direct trains to London Bridge, Blackfriars, St Pancras and Cannon Street, and also Cutty Sark DLR which allows access to Canary Wharf and Bank, plus London City Airport for easy travel abroad.

Features

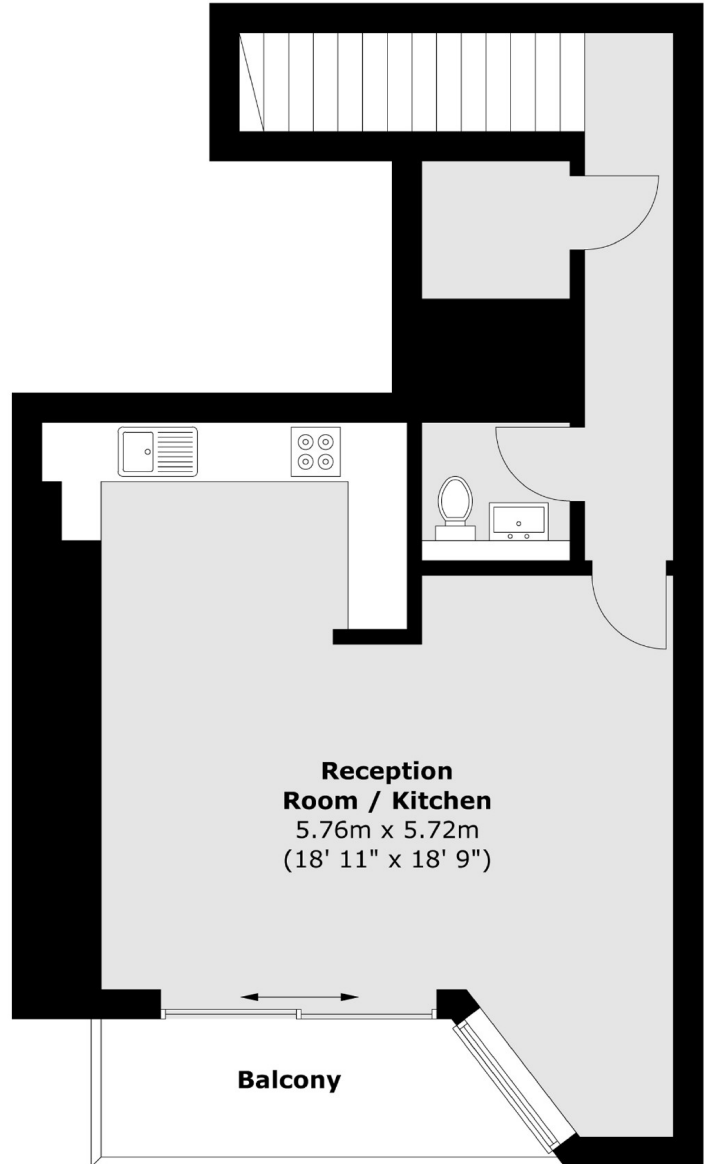
- Two Bedrooms
- Secure Underground Parking
- No Work Required
- Private Balcony
- Split Level
- Immaculate Throughout

Collington Street, London, SE10

First Floor - Lower Level



First Floor - Upper Level



Total area (approx.) : 90.7 sq. m (976 sq. ft)
Total balcony area (approx.) : 4.9 sq. m (53 sq. ft)