

Norman Road, SE10

£650,000

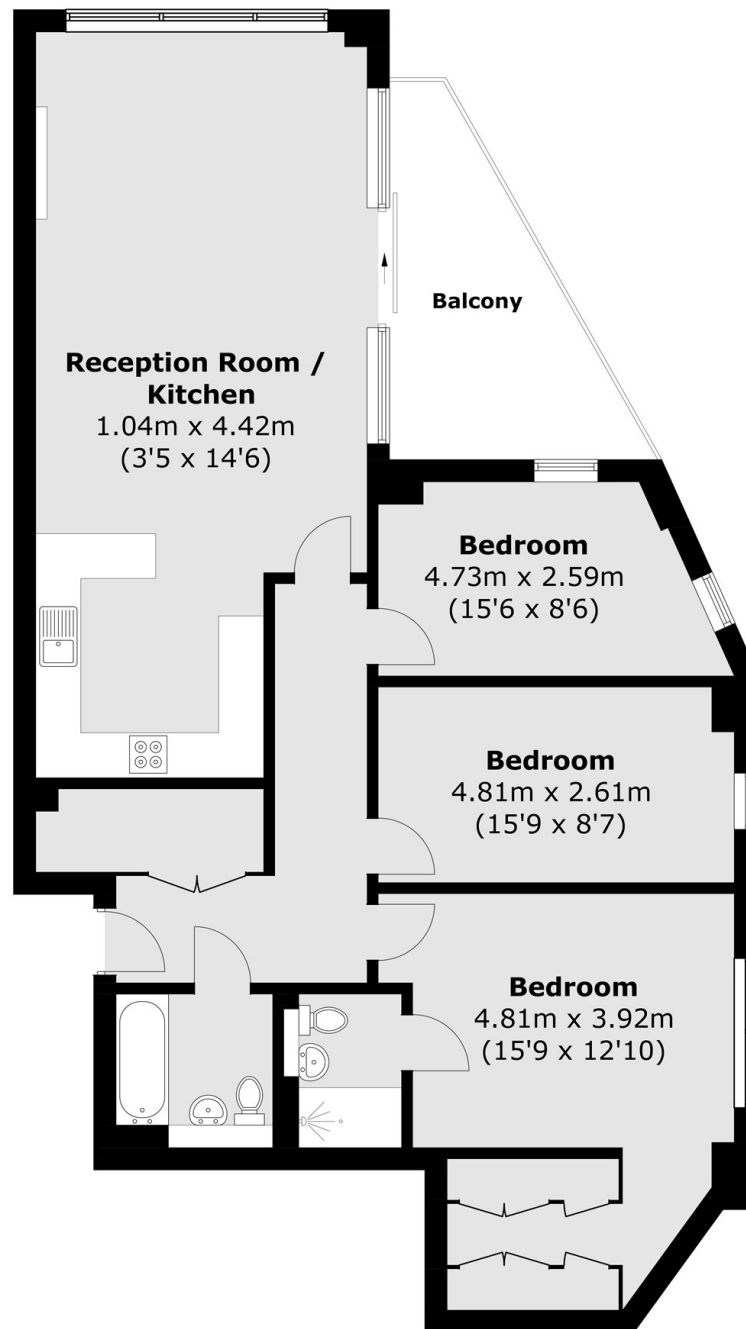
A very well presented high end home featuring three bedrooms, two bathrooms and a private balcony in a secure new development. This home further benefits from floor to ceiling windows offering a bright open plan living space with access to a private balcony. The property further benefits from a modern and integrated kitchen and plenty of storage.

Valegro House is conveniently located at the lower end of Greenwich High Road for all the attractions Royal Greenwich has to offer. It is moments from both the DLR at Deptford Bridge as well as the DLR and mainline at Greenwich station; giving fast and easy access into both Canary Wharf and the City.

Features

- Three Bedrooms
- Two Bathrooms
- Walk In Wardrobe
- Private Balcony
- Chain Free
- Sought After Location

Norman Road,
London, SE10



Total area (approx.): 111.2 sq. m (1,196.9 sq. ft)
Balcony (approx.): 10.9 sq. m (117.3 sq. ft)

Dexters

Greenwich
275 Greenwich High Road
Greenwich
London
Sales
020 8815 2215

Energy Rating: B. We aim to make our particulars both accurate and reliable. However they are not guaranteed; nor do they form part of an offer or contract. If you require clarification on any points then please contact us, especially if you're traveling some distance to view. Please note that appliances and heating systems have not been tested and therefore no warranties can be given as to their good working order.

RICS | Regulated
Estate Agent
and Letting Agent

dexters.co.uk