



Devonshire Drive, SE10

£650,000

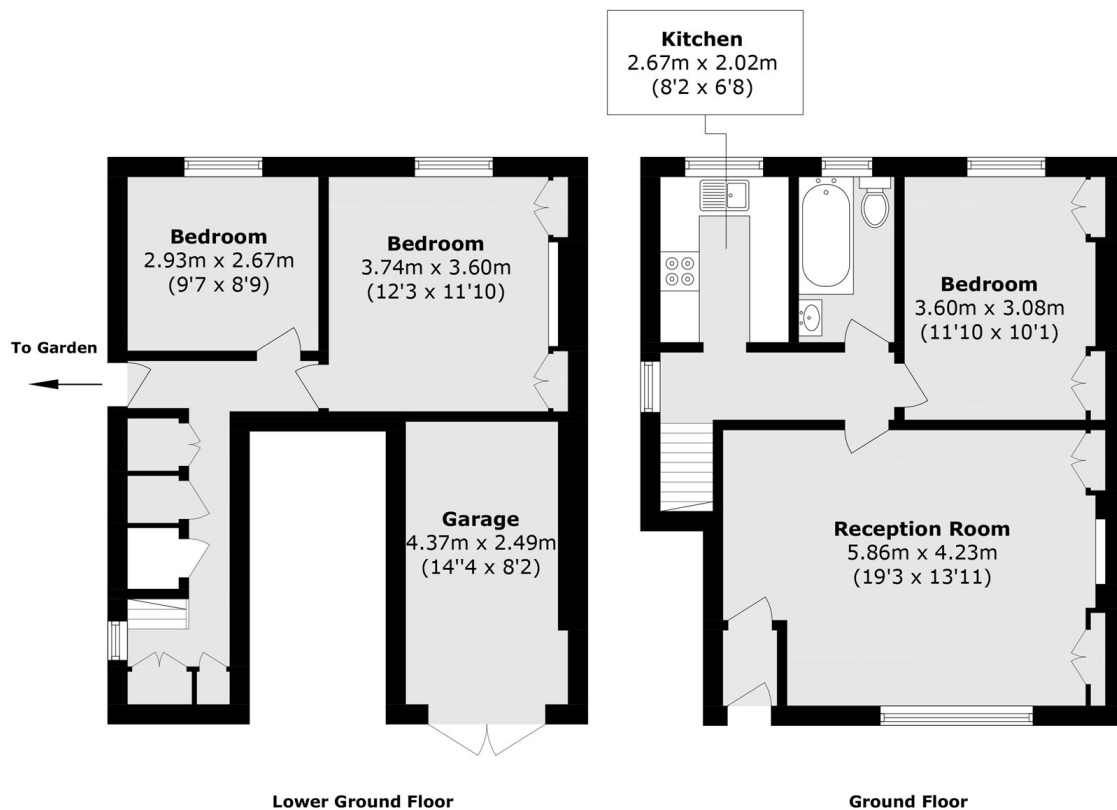
A beautifully presented, three bedroom split level maisonette which has been finished to a high standard, situated in the sought after Ashburnham Triangle. The property further benefits from a private a garage and a shared garden.

Devonshire Drive is widely considered one of the best roads in West Greenwich and forms part of the hugely desirable Ashburnham Triangle. Greenwich Market is just a few moments away, offering a wide array of shops and restaurants, along with riverboat service, mainline rail, DLR and Greenwich Royal Park.

Features

- Three Bedrooms
- Split Level
- Ashburnham Triangle
- Moments From The DLR
- No Work Required
- Sought After Location

Devonshire Drive, London, SE10



Total area (approx.): 84.1 sq. m (905.2 sq. ft)
Garage (approx.): 10.8 sq. m (116.2 sq. ft)