



Cutter Lane, SE10

£475,000

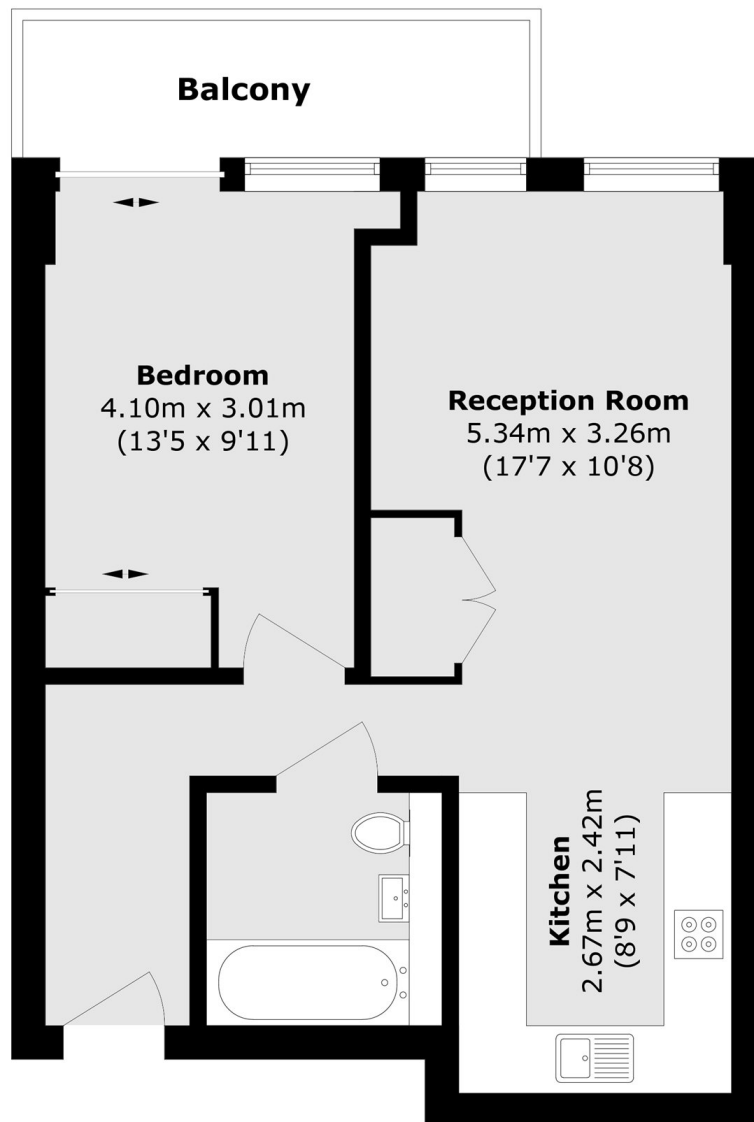
A beautifully presented one double bedroom modern flat with direct river views through and further benefits from a private balcony over looking the river.

Cutter Lane is perfectly located for access into the O2 and all the shops and restaurants on offer. You are also next to the Emirates Light Air and North Greenwich underground.

Features

Ideal First Purchase
River Views
Private Balcony
Sought After Location
No Work Required
Moments From The Jubilee Line

Cutter Lane,
London, SE10



Total area (approx.): 46.5 sq. m (500.5 sq. ft)

Balcony area (approx.): 5.4 sq. m (58.1 sq. ft)