



Blackheath Road, SE10

£400,000

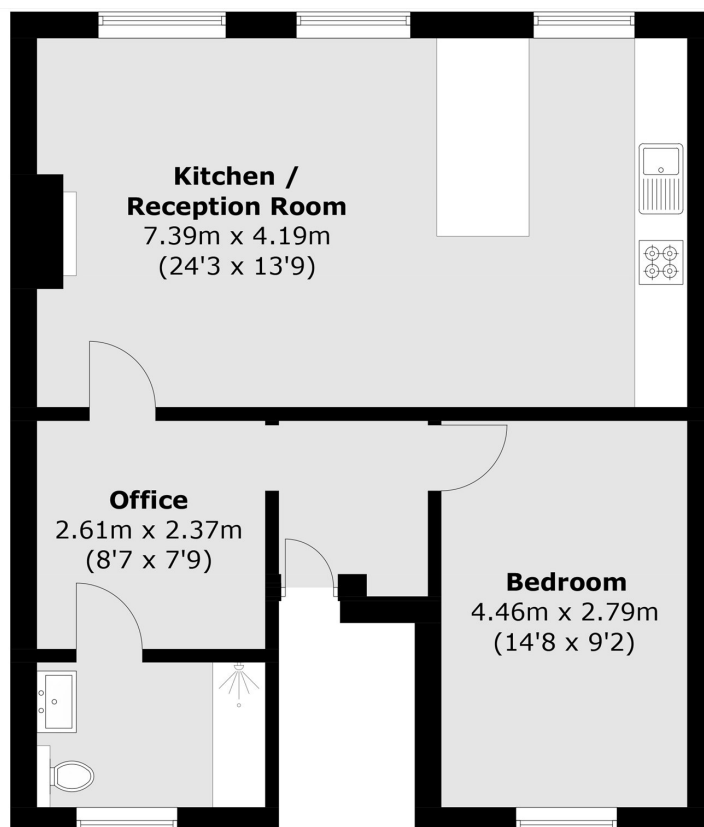
Offered to the market with No Chain, this superb top floor One Bedroom apartment offers almost 650 Sq Ft of living space. The current owners have undertaken extensive refurbishment on the property including new kitchen and bathroom within the last couple of years as well as a new roof to the property in 2020. The flat further benefits from office space as well as secure, gated parking and a lease in excess of 150 years.

The property is ideally located for access to several stations, including Greenwich Mainline, Deptford Bridge DLR and access out of London via the A2. Greenwich Park and the open Heath are just moments away.

Features

- Large One Bedroom Apartment
- Top Floor
- 643 Sq Ft Of Living Space
- Close To Transport
- Secure Gated Parking
- Long Lease

Blackheath Road, London, SE10



Total area (approx.): 59.8 sq. m (643.7 sq. ft)

Dexters

Greenwich
275 Greenwich High Road
Greenwich
London
Sales
020 8815 2215

Energy Rating: C. We aim to make our particulars both accurate and reliable. However they are not guaranteed; nor do they form part of an offer or contract. If you require clarification on any points then please contact us, especially if you're traveling some distance to view. Please note that appliances and heating systems have not been tested and therefore no warranties can be given as to their good working order.

 **RICS** | Regulated
Estate Agent
and Letting Agent

dexters.co.uk