



King George Street, SE10
£1,200,000

Dexters



King George Street, SE10

This phenomenal three bedroom early Georgian family home has been sympathetically restored and renovated to a very high standard boasting period features throughout and is situated one of the most sought after streets in West Greenwich. The property is grade II listed and was built circa 1829.

The property is beautifully presented throughout with period features and has been lovingly maintained by the current owner.

The accommodation is arranged over three floors comprising one spacious double bedrooms on the ground floor, two double bedrooms on the first floor, a delightful and generously sized bathroom on the ground floor and a large dining room, stylish modern kitchen on the lower ground floor. It also has extensive built in storage throughout.

The property further benefits from a beautiful garden which has been professionally landscaped.

Located on one of West Greenwich's most sought after roads and is within moments of Greenwich Royal Park and Greenwich mainline and DLR station providing easy access to Canary Wharf, the City and beyond. Royal Hill with its eclectic mix of independent shops, cafes, restaurants and pubs is a short stroll around the corner.

Features

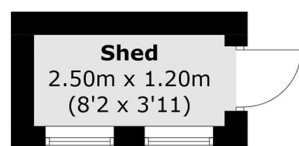
- Highly Sought After Location
- Immaculate Throughout
- Finished To A High Standard
- Three Double Bedrooms
- Period Features
- Family Home



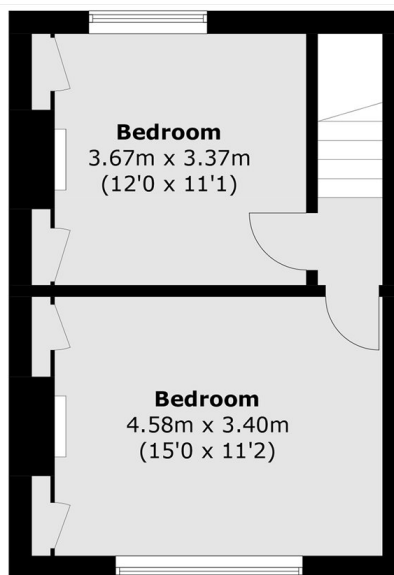




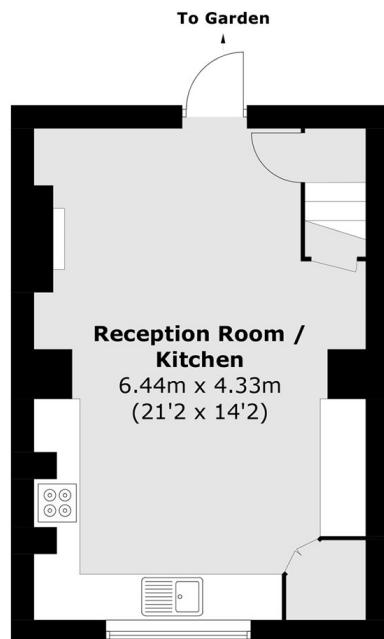
King George Street,
London, SE10



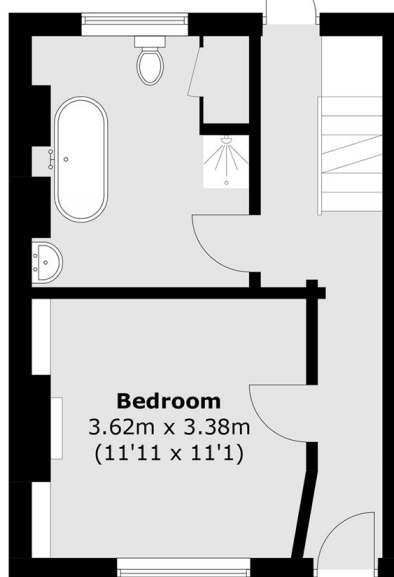
Ground Floor



First Floor



Lower Ground Floor



Ground Floor

Total area (approx.): 91.4 sq. m (983.8 sq. ft)
Shed (approx.): 3.1 sq. m (33.4 sq. ft)