



Telegraph Avenue, SE10

£425,000

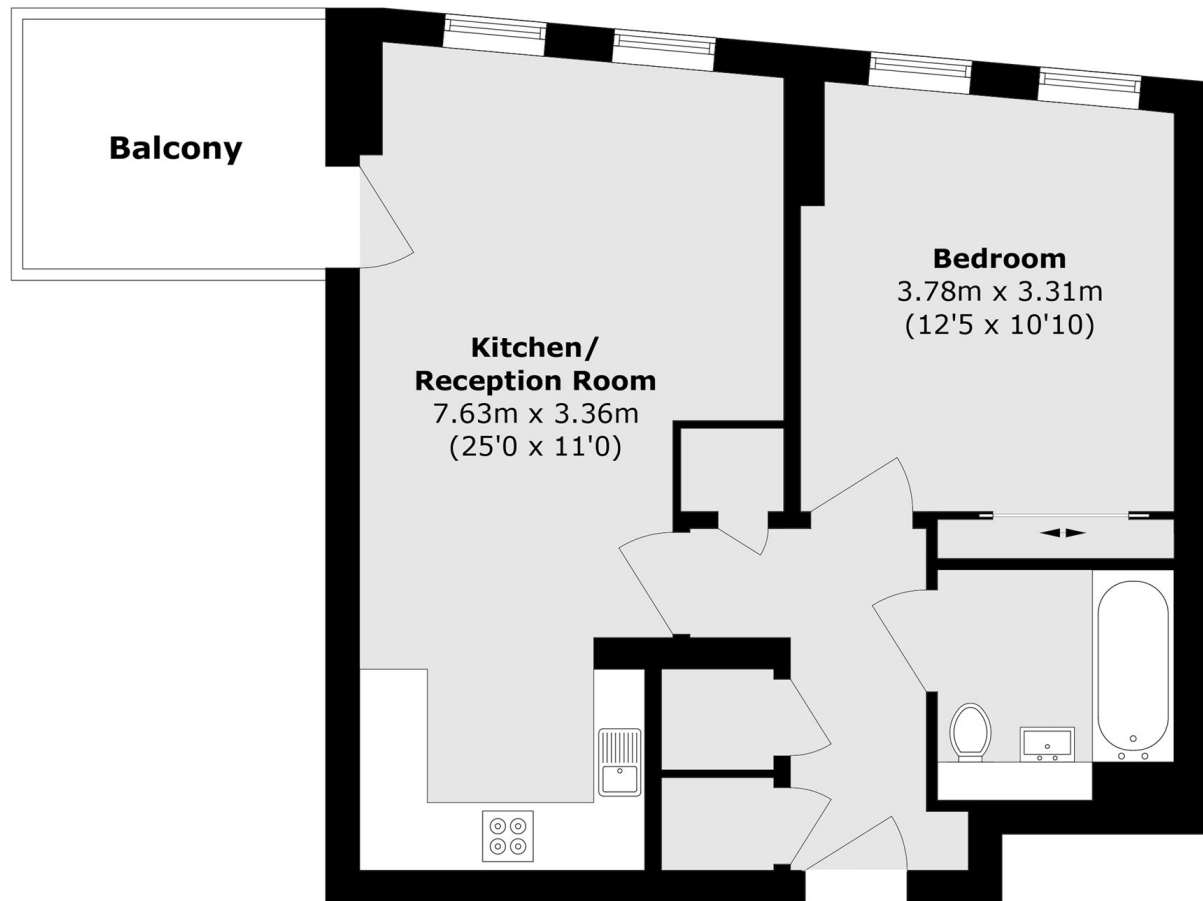
A beautifully presented one bedroom modern apartment in a sought after location which benefits from a private balcony and is offered to the market chain free.

Transport links are excellent with the Jubilee line from North Greenwich station, DLR at Cutty Sark and mainline services from Maze Hill all offering regular services into central London. There are also a wide variety of shops, bars and restaurants in Greenwich Town centre (including the historic market) not forgetting the wide open spaces of Greenwich Park.

Features

- Modern
- Immaculate Throughout
- 24-hour Concierge
- Onsite Gym
- Ideal First Purchase
- Sought After Location

Telegraph Avenue,
London, SE10



Total area (approx.): 49.8 sq. m (536.0 sq. ft)

Balcony area (approx.): 5.9 sq. m (63.5 sq. ft)