

## Peartree Way, SE10

### £550,000

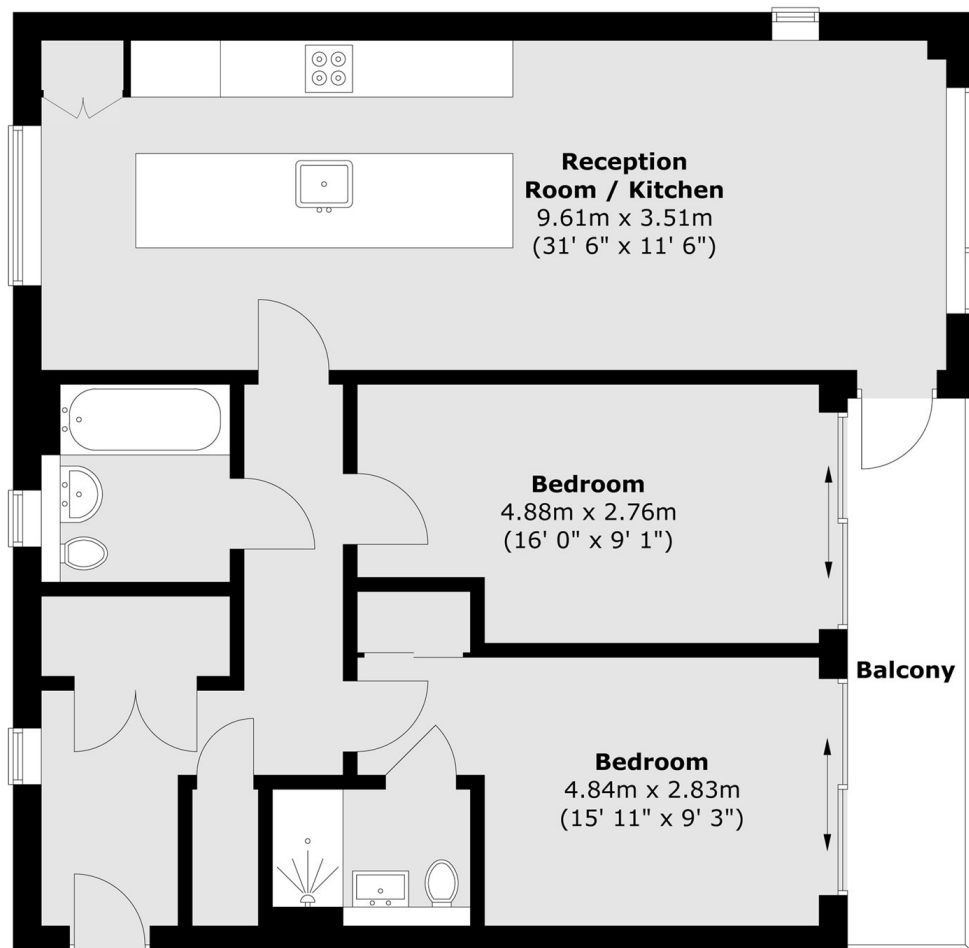
An immaculately presented two bedroom, two bathroom modern flat with its own private balcony in a sought after location, this would make an ideal first purchase.

The apartment is located within walking distance of the O2 which hosts a wide selection of bars, restaurants and cinema, The Emirates cable car is also nearby. North Greenwich tube station provides links to Canary Wharf and London Bridge. Charlton and Westcombe Park overground. Greenwich Millennium Village features an abundance of landscaped green areas and riverside walkways. The development has a health centre, primary school and local shopping facilities. Retail outlets as well as the local shopping facilities. There are excellent transport links with easy access onto the A102, A2 and A13.

### Features

- Modern
- Two Double Bedrooms
- No Work Required
- Private Balcony
- Sought After Location
- Two Bathrooms

Peartree Way,  
London, SE10



Total area (approx.) : 83.5 sq. m (899 sq. ft)  
Total balcony area (approx.) : 7.1 sq. m (76 sq. ft)

**Dexters**

Greenwich  
275 Greenwich High Road  
Greenwich  
London  
Sales  
020 8815 2215

Energy Rating: B. We aim to make our particulars both accurate and reliable. However they are not guaranteed; nor do they form part of an offer or contract. If you require clarification on any points then please contact us, especially if you're traveling some distance to view. Please note that appliances and heating systems have not been tested and therefore no warranties can be given as to their good working order.

 **RICS** | Regulated  
Estate Agent  
and Letting Agent

[dexters.co.uk](https://www.dexters.co.uk)