



Barge Walk, SE10

£2,300 Per calendar month

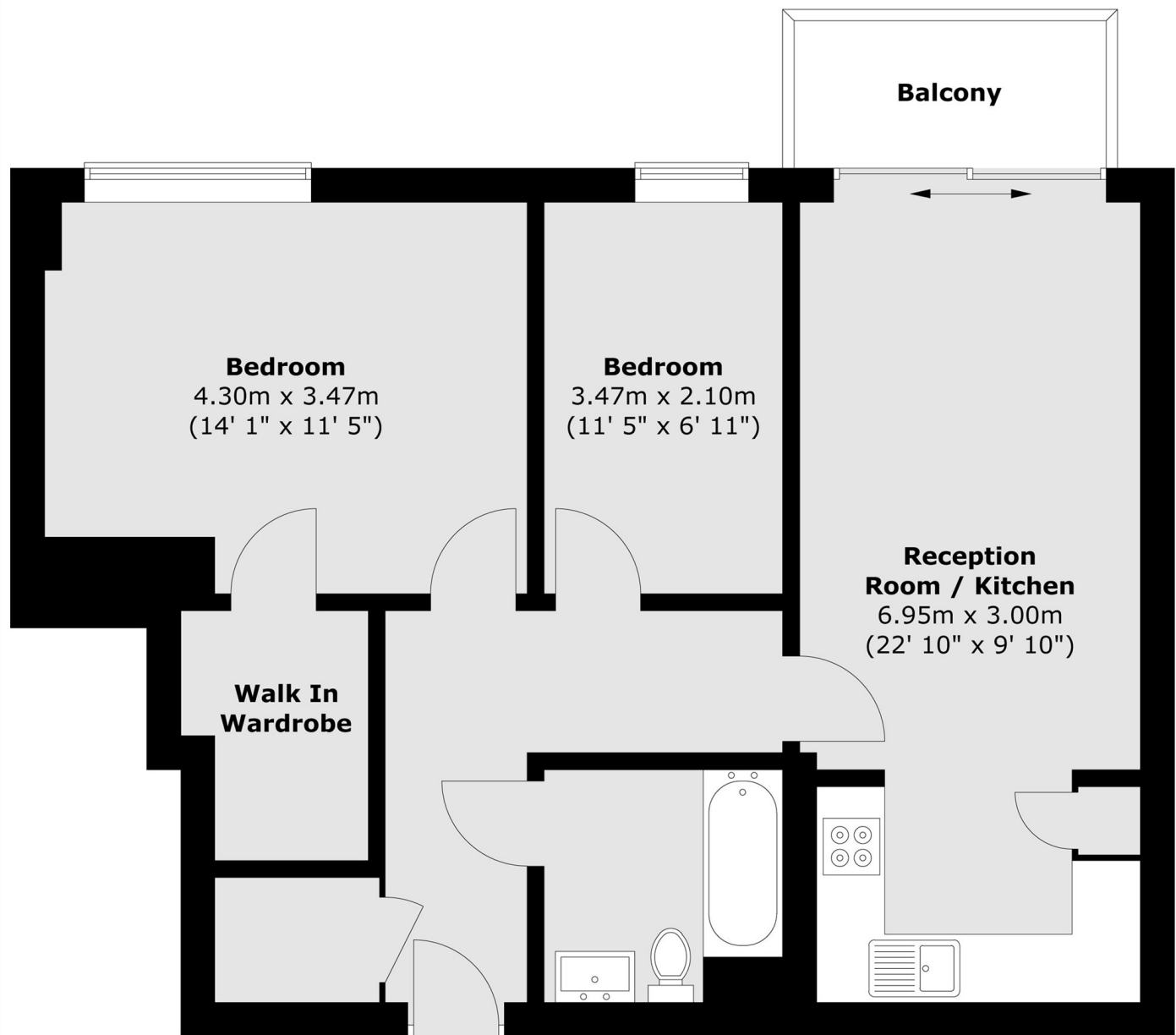
A well-presented, modern two-bedroom apartment in a secure development, featuring open-plan living and a private balcony.

Perfectly positioned close to the River Thames, the property is within 0.6 miles for the Jubilee Line and 1.5 miles to Maze Hill mainline station. Local places of interest would be the O2 for plenty of options of place to eat, drink and shop, Greenwich Park the Observatory and Queens House is 1.5 miles away.

Features

- Modern development
- Two bedrooms
- Open plan living
- Private balcony
- Ample Storage

Barge Walk,
London, SE10



Total area (approx.) : 63.6 sq. m (685 sq. ft)
Total balcony area (approx.) : 3.6 sq. m (39 sq. ft)