



Shacklewell Road, N16

£400,000

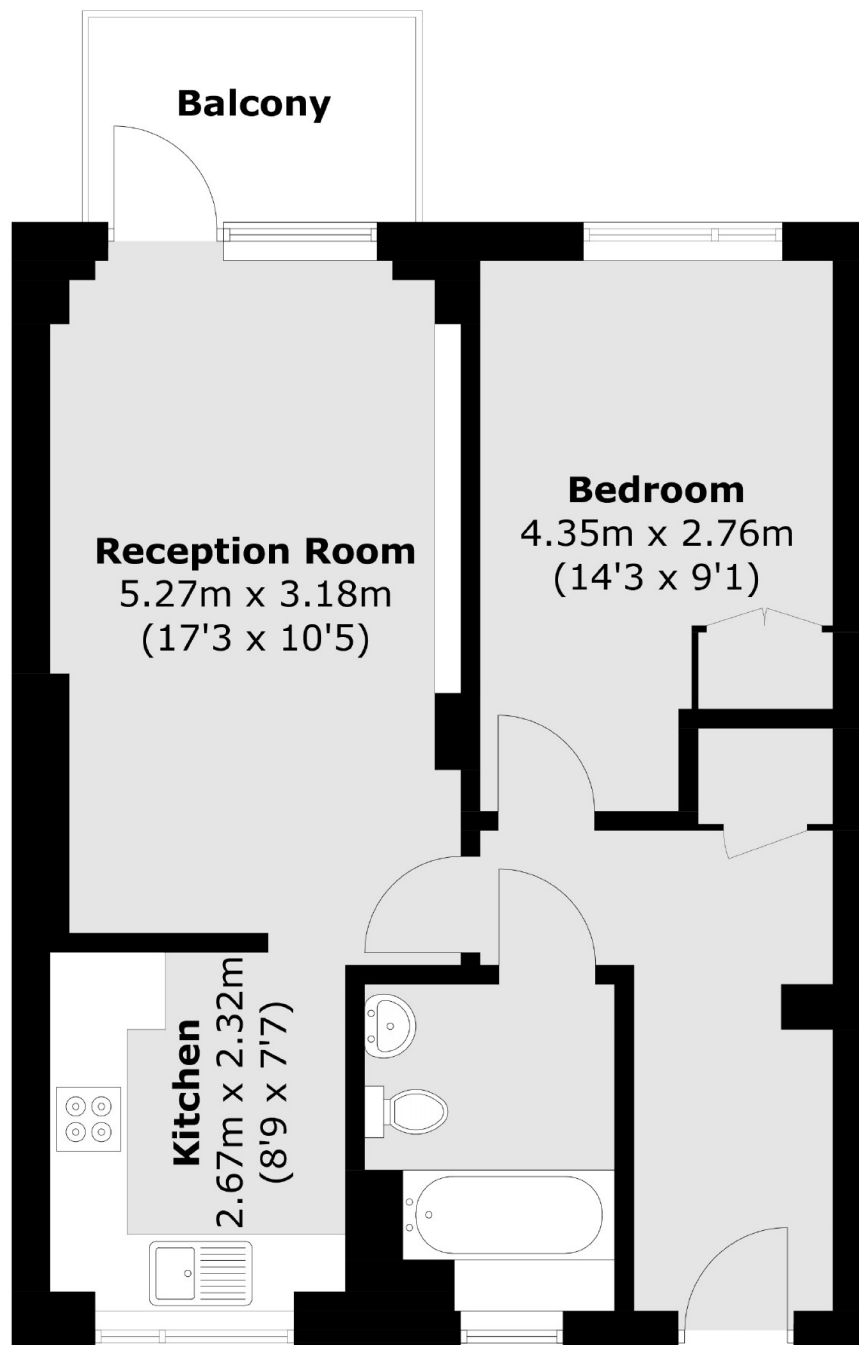
A one double bedroom apartment within a modern secure development in Stoke Newington. The property measures over 540sqft with an open plan kitchen/living area with west facing balcony and far reaching views, large bathroom and double bedroom with built in wardrobes. It has lift access and is being sold chain free.

Barnard House is located within walking distance of Church Street as well as an array of bars, shops and restaurants along Shacklewell Lane, Stoke Newington Road and Kingsland Road. Rectory Road Overground Stations is just over half a mile away offering easy access into Liverpool Street. The green space of Hackney Downs Park is only a few streets away and London Fields is also within walking distance.

Features

- One Double Bedroom
- Modern Development
- Open Plan
- Chain Free
- Bespoke Storage
- Private Balcony

Shacklewell Road, London, N16



Total area (approx.): 50.3 sq. m (541.4 sq. ft)
Balcony area : 4.1 sq. m (44.1 sq. ft)

Dexters

Hackney Central
331 Mare Street
Hackney
London
Sales
020 7067 2420

Energy Rating: B. We aim to make our particulars both accurate and reliable. However they are not guaranteed; nor do they form part of an offer or contract. If you require clarification on any points then please contact us, especially if you're traveling some distance to view. Please note that appliances and heating systems have not been tested and therefore no warranties can be given as to their good working order.

 **RICS** | Regulated
Estate Agent
and Letting Agent

[dexters.co.uk](https://www.dexters.co.uk)