



## Benn Street, E9

### £750,000

A three bedroom, three storey Victorian terrace with private garden. The home has a large family bathroom, feature fireplace, sash windows, wooden floors and bespoke joinery throughout. It is being sold chain free.

Benn Street is a quiet residential street around the corner from Victoria Park. It is half a mile from Homerton Overground Station and Chatsworth Road market with its many shops, cafes and Sunday Market.

### Features

- Victorian Terrace
- Three Bedrooms
- Loft Extension
- Garden
- Victoria Park
- Chain Free



## Benn Street, E9

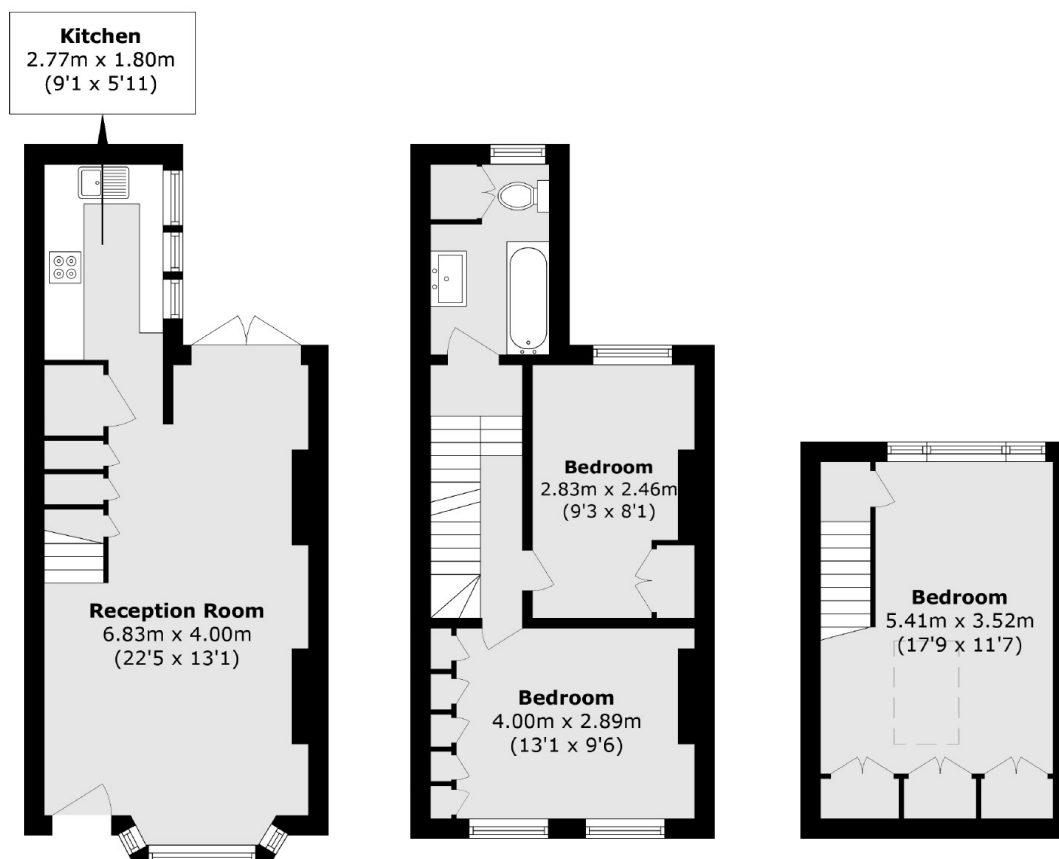
On the ground floor is a large double reception room with wooden floors, bay window and gas fireplace. To the rear of the house is the U shaped kitchen with tile splashback and stainless steel countertops. There are french doors leading out to the private patio garden.

Upstairs are two double bedrooms with built in storage and family bathroom. The loft extension consists of another double bedroom with skylights and useful eaves storage.





# Benn Street, London, E9



Total area (approx.): 85.7 sq. m (922.4 sq. ft)

## Dexters

Hackney Central  
331 Mare Street  
Hackney  
London  
Sales  
020 7067 2420

Energy Rating: C. We aim to make our particulars both accurate and reliable. However they are not guaranteed; nor do they form part of an offer or contract. If you require clarification on any points then please contact us, especially if you're traveling some distance to view. Please note that appliances and heating systems have not been tested and therefore no warranties can be given as to their good working order.

 **RICS** | Regulated  
Estate Agent  
and Letting Agent

[dexters.co.uk](https://www.dexters.co.uk)