



## Queensdown Road, E5

### £450,000

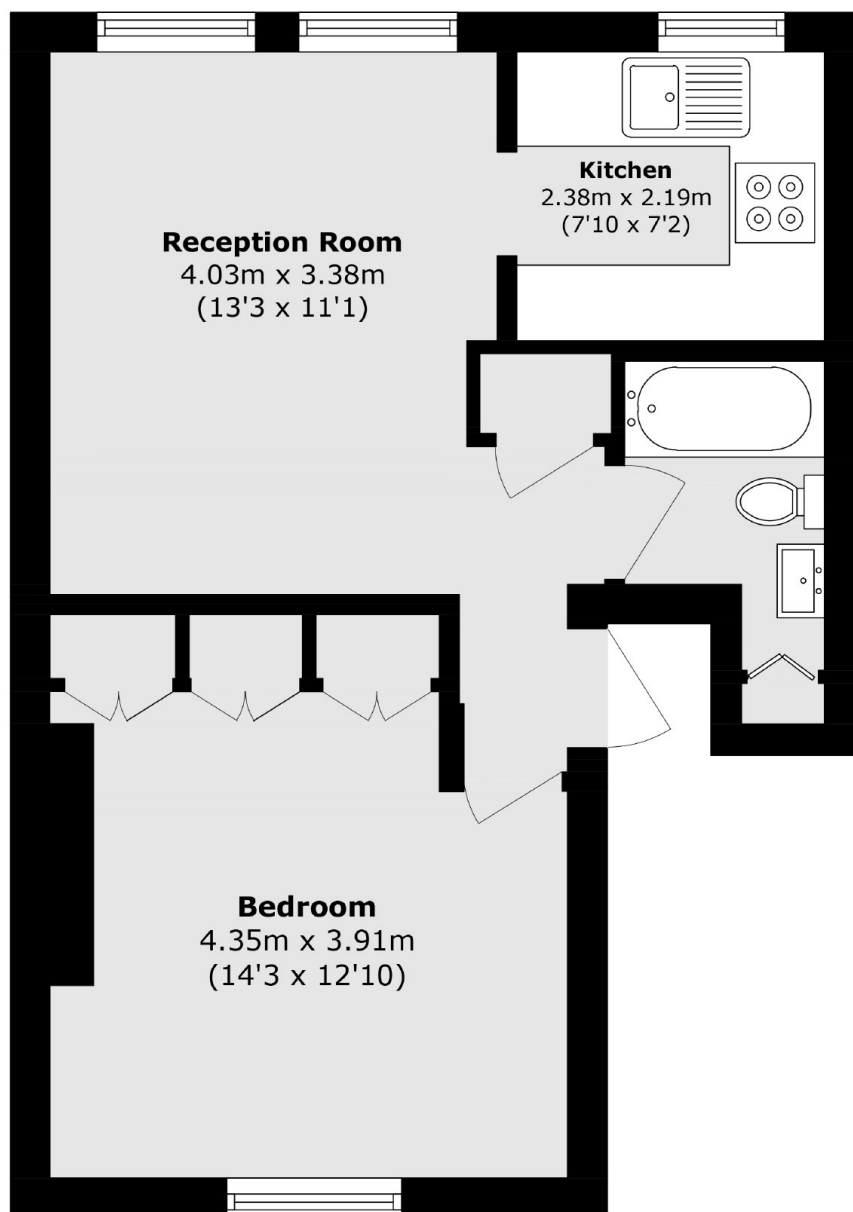
A one bedroom period conversion within a former Victorian home with unobstructed views over Hackney Downs Park. The characterful property has been modernised yet retains many of its original period features; wooden floors, sash windows and high ceilings. It benefits being sold with a Share of the Freehold and no onward chain.

Ideally located on Hackney Downs Park offering many opportunities for outdoor recreation including tennis. Rectory Road, Clapton, Hackney Downs and Hackney Central Overground stations are all half a mile away offering numerous transport links. The many shops, cafés and restaurants on Kingsland Road, Mare Street and Chatsworth Road are also within walking distance.

### Features

- Victorian Conversion
- Top Floor
- Park Views
- Hackney Downs Park
- Chain Free
- Share of Freehold

# Queensdown Road, London, E5



Total area (approx.): 41.8 sq. m (449.9 sq. ft)