



Benthal Road, N16

£760,000

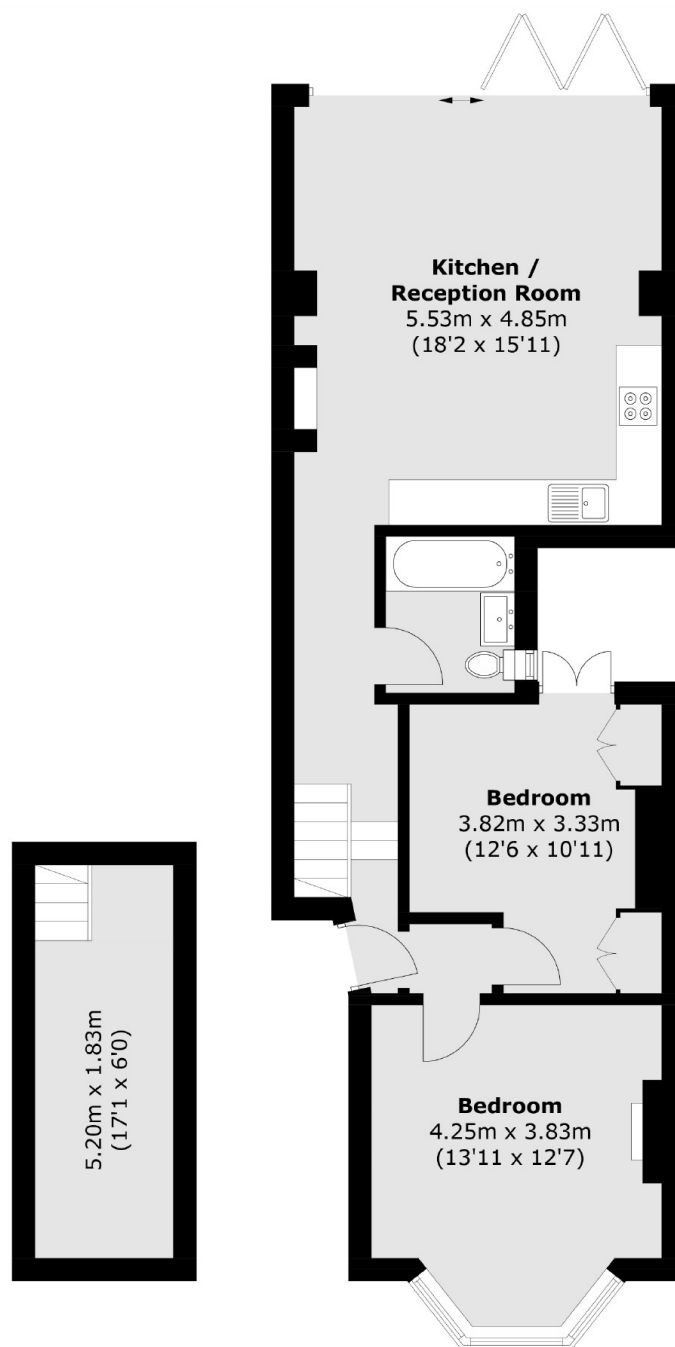
A two double bedroom split level Victorian garden flat on a quiet residential road within the Northwold and Cazenove Conservation Area. The property has high ceilings, wooden floors and an open plan kitchen living area with glass bi-fold doors opening up to the large private garden with decked patio area. There is also a useful utility/storage area under the stairs.

Situated within walking distance of the boutique shops, cafes, pubs and restaurants of Stoke Newington Church Street. Stoke Newington Common is at the end of the road and Hackney Downs, Abney Park and Clissold Park are also nearby. There are excellent transport links with Rectory Road Overground providing easy access to Liverpool Street and Seven Sisters for connections to the tube (Victoria Line) as well as numerous local bus routes into the West End and City.

Features

- Victorian Conversion
- Two Double Bedrooms
- Split Level
- Bi-Fold Doors
- Private Garden
- Share of Freehold

Benthal Road, London, N16



Lower Ground Floor

Ground Floor

Total area (approx.): 76.7 sq. m (825.5 sq. ft)