



Lower Clapton Road, E5

£700,000

A modern three bedroom split level apartment measuring 1000 sq ft in the boutique development, Nonet House. The property has its own private entrance, engineered wood flooring, a spacious open plan kitchen/living area, two bathrooms with one en-suite & separate W/C and two private patio terraces. The property faces South and has multiple floor to ceiling glass windows and doors providing natural light throughout.

Nonet House is ideally located in Lower Clapton on a tree-lined residential street, Goulton Road. The green spaces of Hackney Downs Park and Clapton Square are under a quarter of a mile away and many independent shops, cafes and restaurants are on your doorstep including Mare Street, Clarence Road and Chatsworth Road with its Sunday market. The property has excellent transport links with numerous bus routes on nearby Lower Clapton Road, and Hackney Central and Hackney Downs stations both 0.6 miles away.

Features

Offers Over £700,000
Three Double Bedrooms
Two Bathrooms + W/C
Split Level
Modern
Private Entrance
Two Outdoor Terraces
1,000 sq ft
Chain Free



Lower Clapton Road, E5

Entering on ground level the living area has space to dine, modern kitchen with built in appliances and separate W/C.

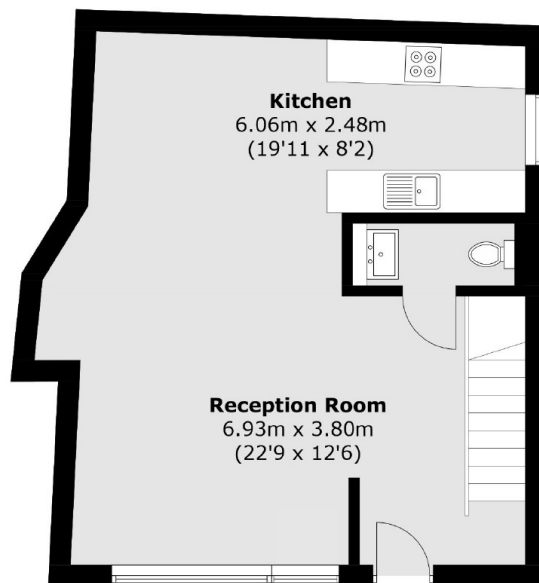
Downstairs is a spacious bathroom and three double bedrooms with built in storage and one bedroom currently being used as an office. Two of the bedrooms have their own patio terraces and the primary bedroom comes with an en-suite.

Built in 2018 Nonet House provides modern apartments that are energy efficient, low maintenance and with a long lease. The National House Building Council (NHBC) Warranty is valid until 2028 and the leaseholders have Right to Manage.

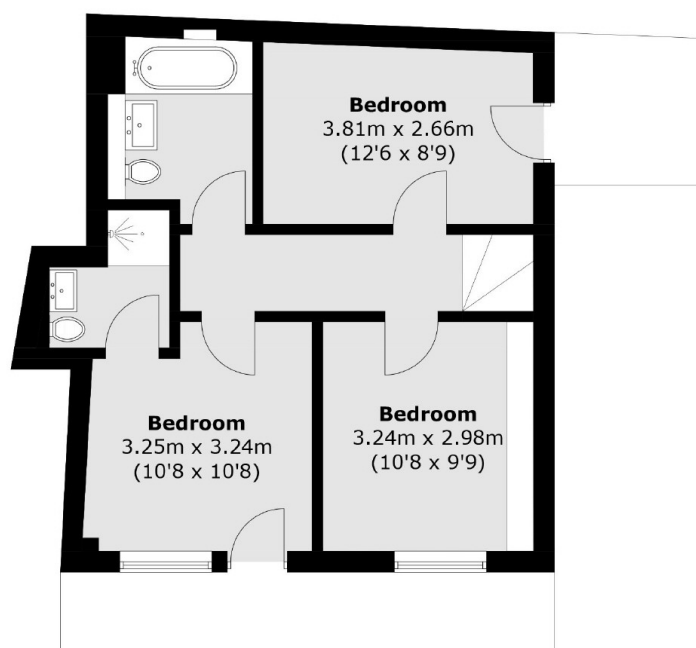
The property is offered chain-free.



Lower Clapton Road, London, E5



Ground Floor



Lower Ground Floor

Total area (approx.): 92.9 sq. m (1000.0 sq. ft)