



Abersham Road, E8

£450,000

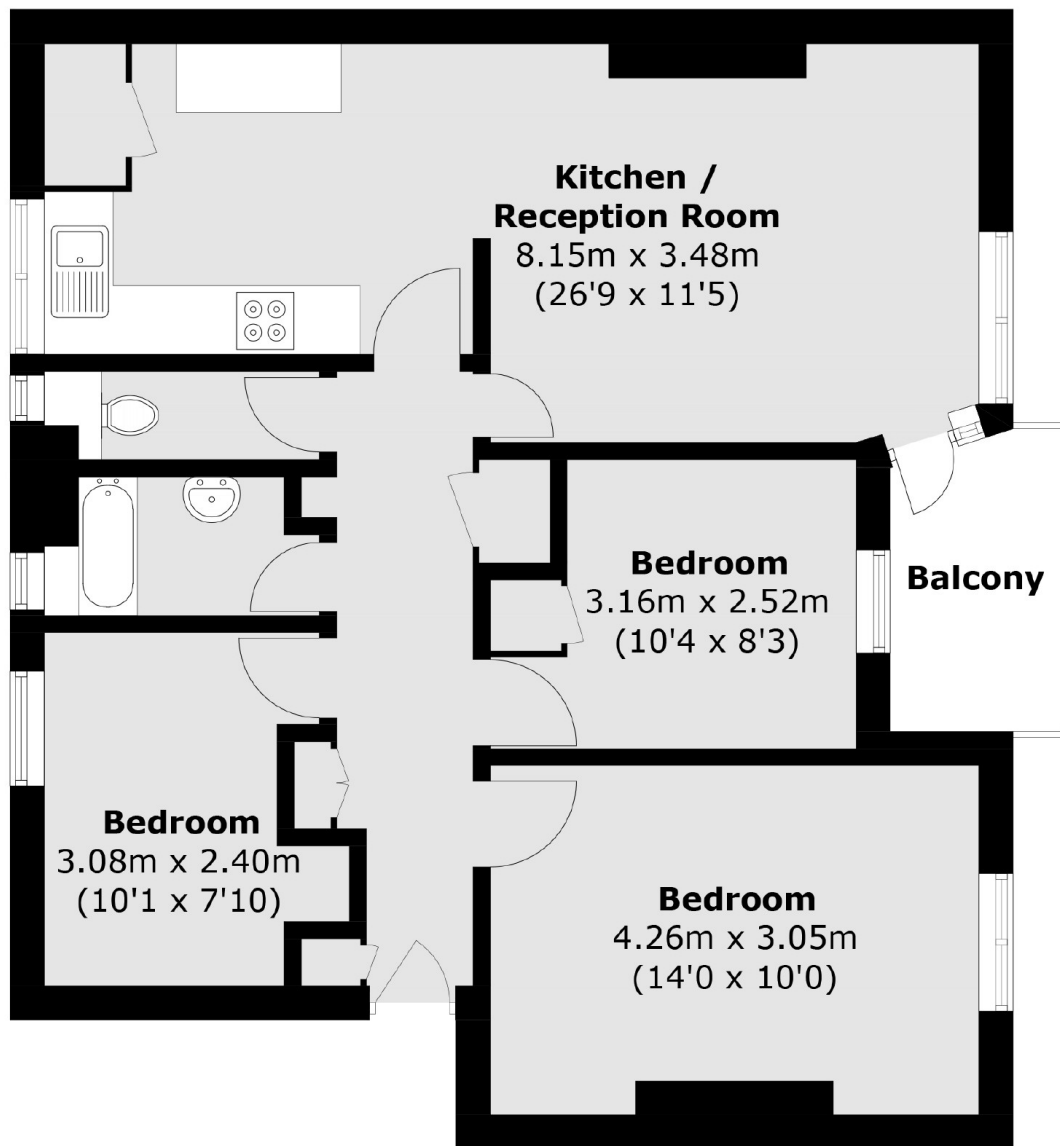
A three bedroom purpose built flat in a sought after E8 location. The property measures over 740 sq ft and benefits from plenty of storage, private balcony, wooden floors, open plan kitchen & living area, separate W/C and its proximity to shops, amenities and transport links.

Abersham Road is located moments away from Ridley Road, Mare Street and Kingsland High Street with an abundance of cafés and local amenities. Dalston Kingsland, Dalston Junction and Hackney Downs Overground stations are all half a mile away providing easy access to the rest of the City. Hackney Downs Park is a quarter of a mile away and London Fields is under one mile.

Features

Offers Over
Three Bedrooms
Purpose Built
Open Plan
Private Balcony
Close to Amenities
Chain Free

Abersham Road, London, E8



Total area (approx.): 68.8 sq. m (740.6 sq. ft)
Balcony area: 3.8 sq. m (40.9 sq. ft)