



**Navarino Grove, E8**

**£1,200,000**

**Dexters**



## Navarino Grove, E8

A three bedroom Victorian terrace with a private garden on the sought after cul-de sac, Navarino Grove. Set across two levels the house has been renovated throughout by its current owners and comes with a garden studio.

The ground floor has been thoughtfully opened up to create a spacious, free-flowing layout that extends the full length of the property with skylights throughout, two sitting rooms, dining room and large modern U-shaped kitchen. Glass doors lead to the landscaped private garden with garden studio. There is a W/C on this level and a hidden pantry.

Upstairs are three bedrooms and family bathroom with skylight and underfloor heating

The home has double glazed sash windows and wooden flooring throughout.

Navarino Grove is a quiet residential road located off of Navarino Road. Navarino Grove is one of the prime residential roads in the Hackney area; being less than half a mile from both London Fields and Hackney Central. Broadway Market is also close by with many local amenities and famous weekend market.

### Features

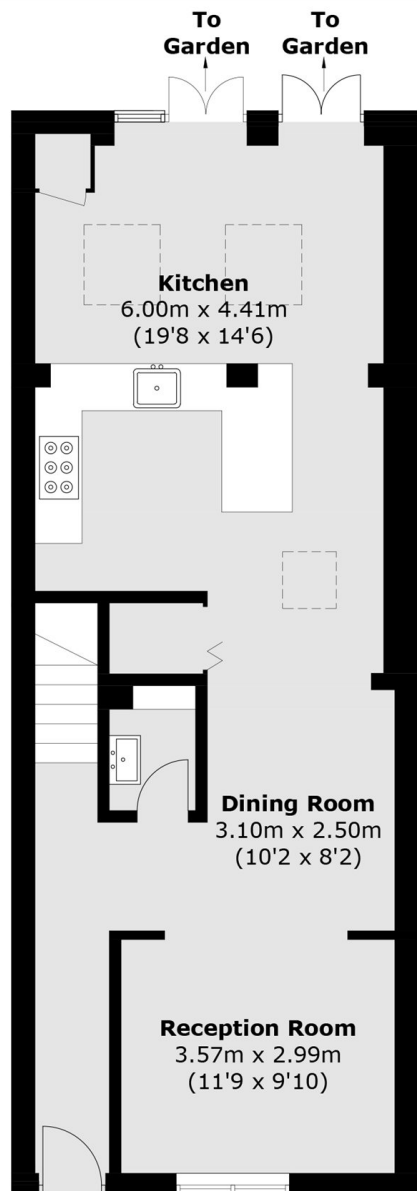
- Victorian Terrace
- Three Bedrooms
- Private Garden
- Garden Studio
- Cul-De-Sac
- Recently Renovated



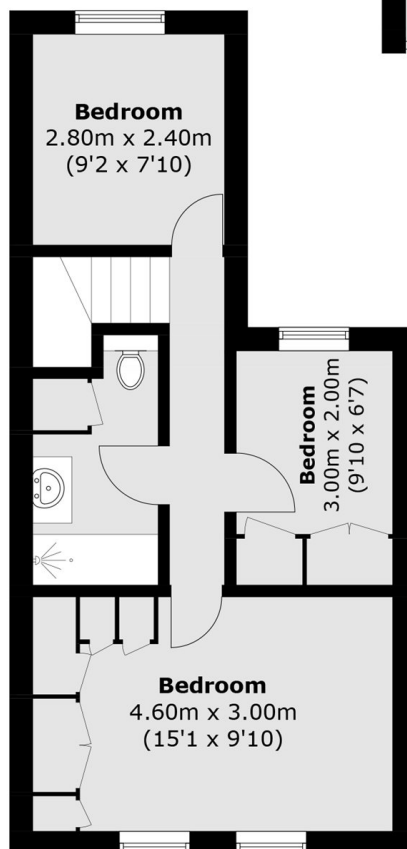




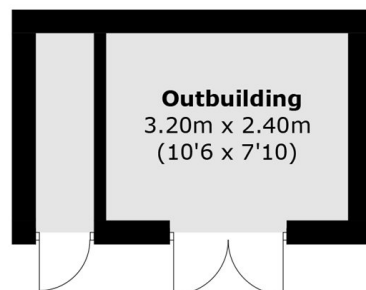
# Navarino Grove, London, E8



**Ground Floor**



**First Floor**



**(Not Shown In Actual  
Location / Orientation)**

Total area (approx.): 98.8 sq. m (1,063.4 sq. ft)  
Outbuilding : 9.9 sq. m (106.6 sq. ft)