



Richmond Road, E8

£625,000

A beautiful two bedroom, two bathroom apartment in the award winning development, Arthaus. The property is set across two levels with the bedrooms & en-suite on the mezzanine floor. There are modern fixtures and finishes throughout with an open plan kitchen living area with double height ceilings and Crittal windows, engineered wood flooring, plenty of built in storage and underfloor heating. It is being sold chain free.

This property is located a short walk from London Fields and the popular Broadway Market with its endless bars, restaurants and café's. The building is also served by three in-house restaurants including the well known bakery: Pophams. Hackney Central, Hackney Downs and London Fields Overground stations are all a short walk away.

Features

- Two Double Bedrooms
- Two Bathrooms
- Split Level
- Allocated Underground Parking
- Concierge
- External Storage Unit

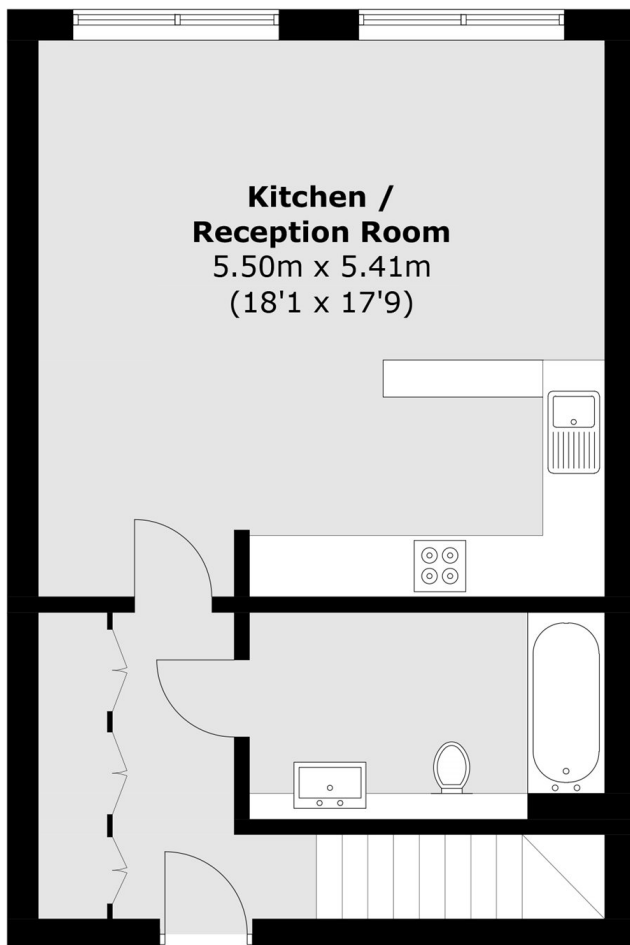


Richmond Road, E8

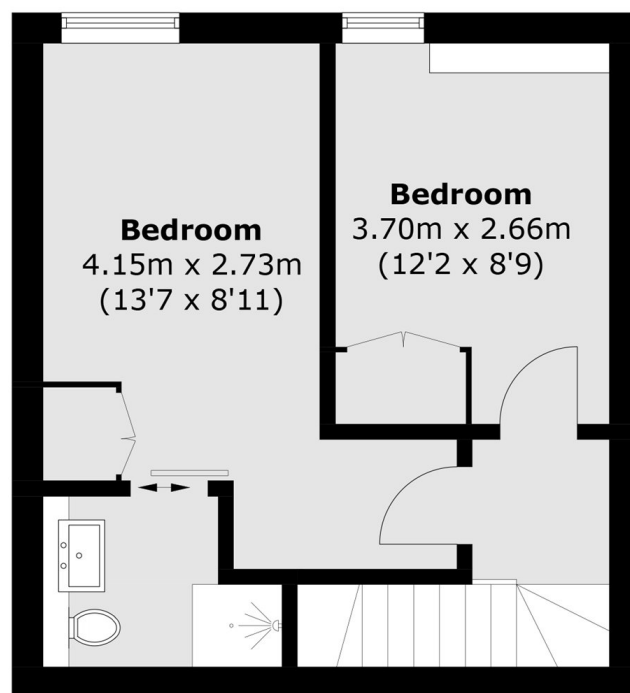
The development benefits from a communal roof terrace, concierge, bike storage and lift access. The property comes with a secure underground parking space and storage unit.



Richmond Road, London, E8



First Floor



Second Floor

Total area (approx.): 80.4 sq. m (865.3 sq. ft)