

Chatsworth Road, E5

£400,000

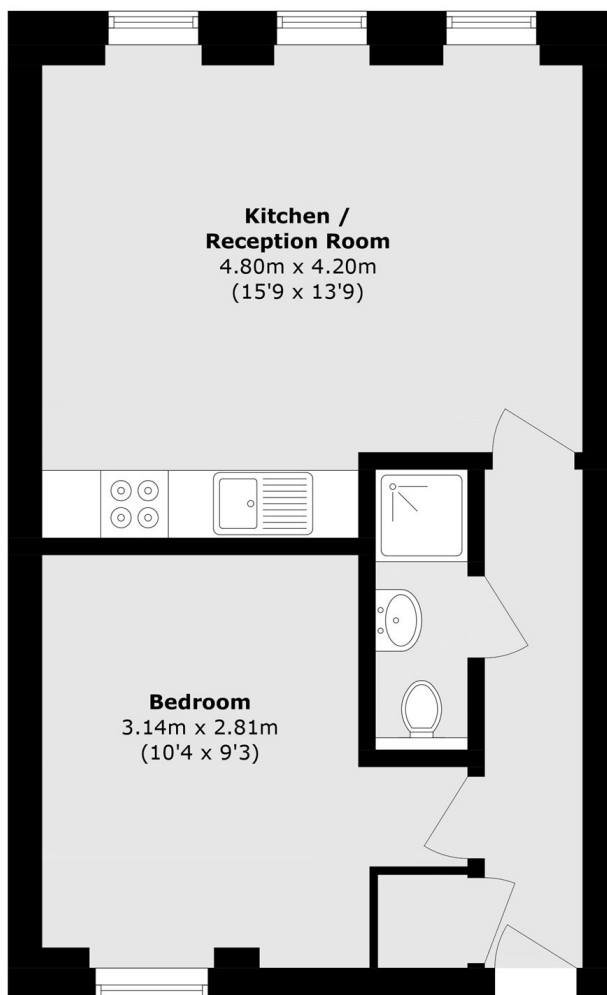
A modern one bedroom within a Victorian conversion on the well known Chatsworth Road. There is an open plan kitchen living area with newly fitted kitchen & gold fixtures, sleek bathroom and double bedroom. The property is being sold with a long lease.

Located on Clapton's most well known road there is an abundance of independent shops, cafes and restaurants on your doorstep. The green spaces of Millfields Park and Hackney Marshes are down the street offering many opportunities for outdoor recreation. Homerton Overground is half a mile away and Clapton, Hackney Downs & Hackney Central Overground stations are all under one mile away providing easy access to the rest of London.

Features

- Victorian Conversion
- One Double Bedroom
- Open Plan
- Modern Finishes
- Millfields Park
- Long Lease

Chatsworth Road, London, E5



Total area (approx.): 39.3 sq. m (423.0 sq. ft)