



Upper Clapton Road, E5

£365,000

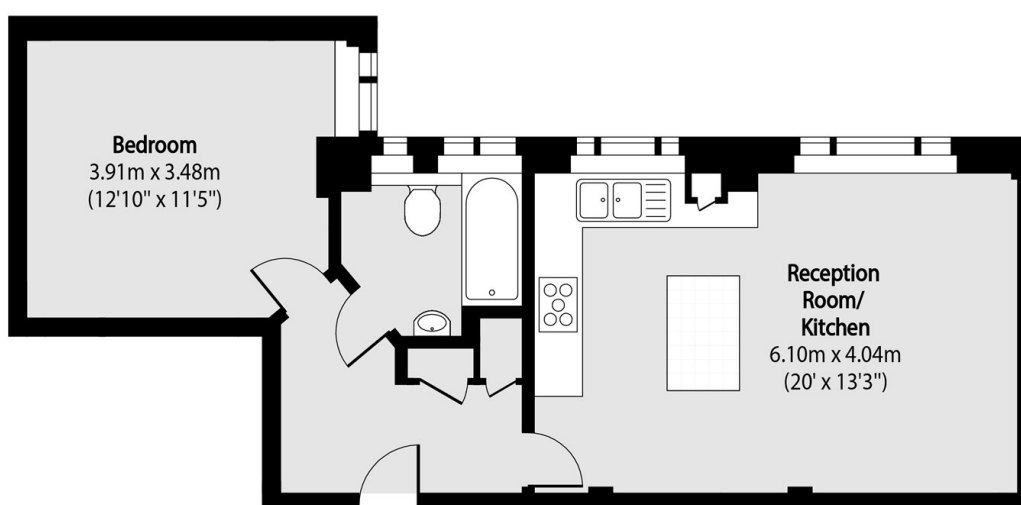
A one double bedroom Art Deco purpose built flat measuring over 530 sq ft in an ideal Clapton location. Modern throughout with a large open plan kitchen, bathroom with white gloss tiles and spacious double bedroom. The building has communal gardens, lift access and secure bike storage.

Beaumont Court is 500 ft from Clapton Overground Station offering direct access into transport hub Liverpool Street Station. There are many independent cafes, pubs, restaurants and shops on your doorstep including Suba, The Crooked Billet, Tram Depot, Clapton Heart, as well as the many green spaces of Hackney Downs Park, Millfields Park and the Hackney Marshes.

Features

- One Double Bedroom
- Open Plan
- Over 530 sq ft
- Communal Garden
- Art Deco
- Chain Free
- Millfields Park

Upper Clapton Road, London, E5



Total area (approx): 49.61 sq m (534 sq. ft)