



Norman Road, E11

£500,000

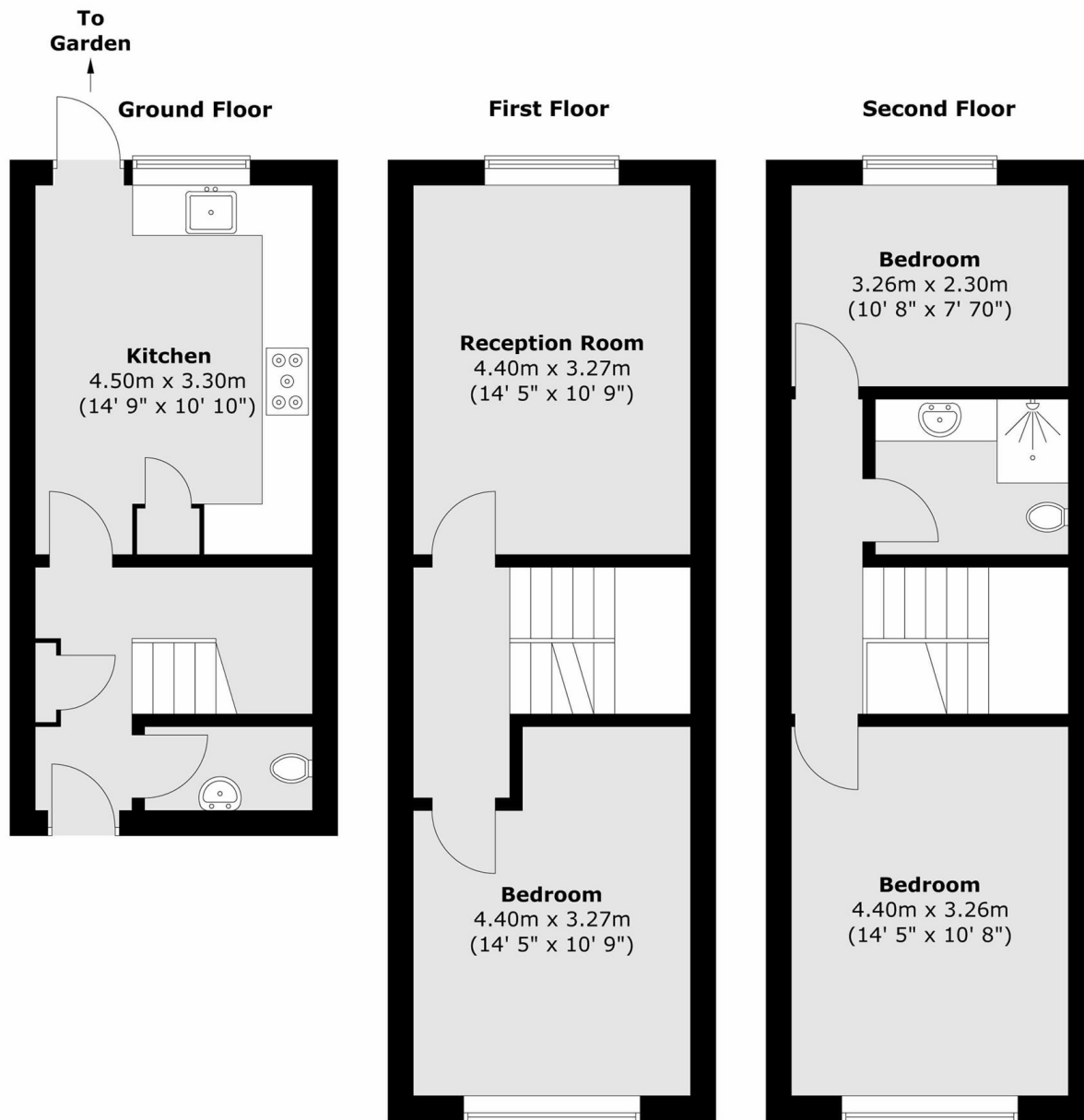
Situated over three floors, this freehold home measures over 1,030 sq ft and benefits from a west-facing rear garden. The property currently includes a private driveway, a kitchen/reception area, three double bedrooms, a family bathroom & separate W/C. There is potential to renovate and extend into the loft, subject to the usual planning consents.

Well served by public transport, with nearby Central line and overground stations, local bus routes, Cathall Leisure Centre within walking distance, and easy access to Westfield Stratford City.

Features

- Freehold Terrace
- Three Bedrooms
- Over 1,030 Sq Ft
- Chain Free
- Driveway Parking
- Potential to Extend

Norman Road, London, E11



Total area (approx.) : 96.5 sq. m (1039 sq. ft)

Dexters

Hackney Central
331 Mare Street
Hackney
London
Sales
020 7067 2420

Energy Rating: . We aim to make our particulars both accurate and reliable. However they are not guaranteed; nor do they form part of an offer or contract. If you require clarification on any points then please contact us, especially if you're traveling some distance to view. Please note that appliances and heating systems have not been tested and therefore no warranties can be given as to their good working order.

 **RICS** | Regulated
Estate Agent
and Letting Agent

[dexters.co.uk](https://www.dexters.co.uk)