



SUSSEX STREET
PIMLICO

JACKSON-STOPS 

SUSSEX STREET PIMLICO, SW1V

ASKING PRICE: £750 PER WEEK

A split-level apartment on the third floor of a period Pimlico property.

The property is bright and spacious with a large private roof terrace.

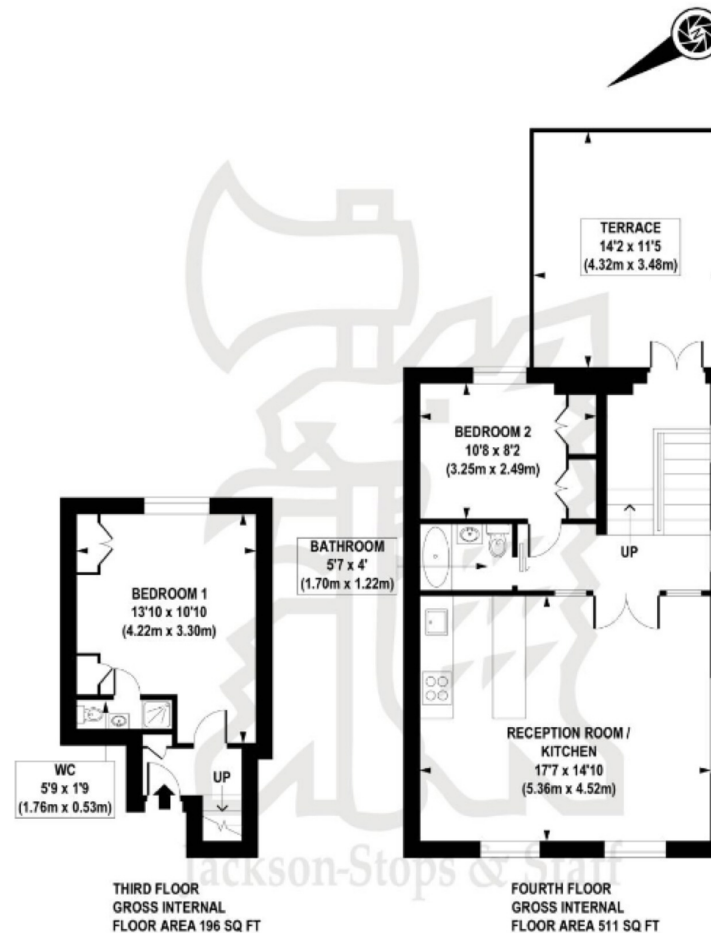
Just 0.5 miles from Pimlico Underground Station, 0.7 miles from Victoria Station, 0.7 miles from Sloane Square Underground Station and 0.6 miles from Battersea Park.

KEY FEATURES

- Two Bedrooms
- Two Bathrooms
- Kitchen
- Reception
- Roof Terrace
- Tax Band: E







COMPLIANT WITH RICS CODE OF MEASURING PRACTICE Floorplan is for illustrative purposes only and is not to scale. Every attempt has been made to ensure the accuracy of the floorplan shown, however all measurements, fixtures, fittings and data shown are an approximate interpretation for illustrative purposes only. Liability for errors, omissions or mis-statement through negligence or otherwise is hereby excluded.



Energy Rating: E. We aim to make our particulars both accurate and reliable. However they are not guaranteed; nor do they form part of an offer or contract. If you require clarification on any points then please contact us, especially if you are travelling some distance to view. Please note that appliances and heating systems have not been tested and therefore no warranties can be given as to their good working order.

ASKING PRICE: £750 PER WEEK

PIMLICO

020 7828 4243

pimlicolettings@jackson-stops.com

jackson-stops.co.uk

JACKSON-STOPS 