



ALDERNEY STREET
PIMLICO

JACKSON-STOPS 

ALDERNEY STREET PIMLICO, SW1V

ASKING PRICE: £600 PER WEEK

A recently refurbished basement flat in the heart of the Pimlico Grid.

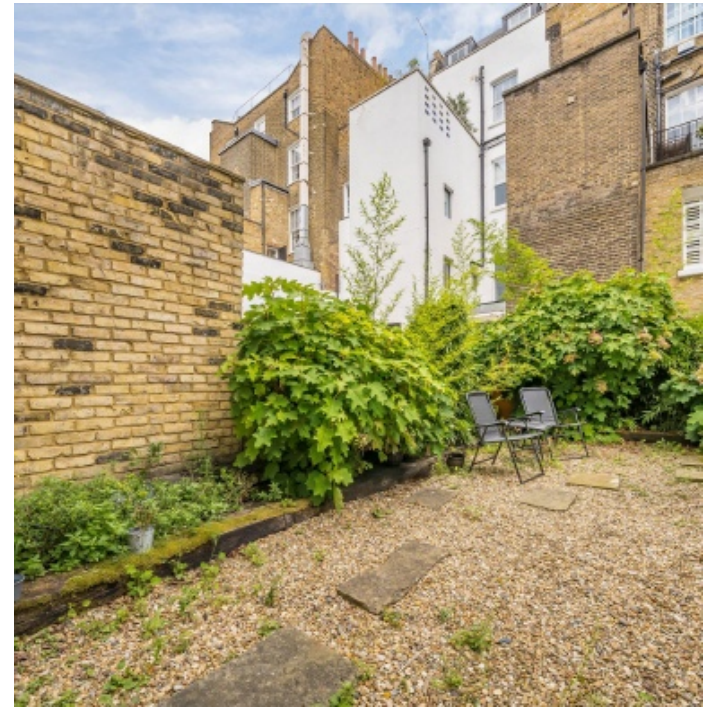
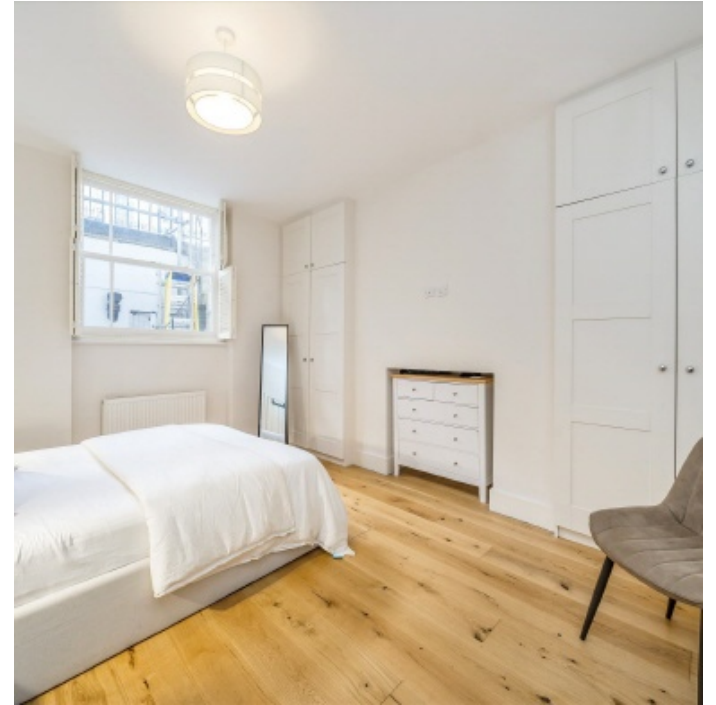
The property has wooden flooring throughout, good storage and a larger than average garden. Reception room; semi open-plan kitchen; double bedroom; shower room; utility room.

Just 0.5 miles from Pimlico Underground Station and Victoria Station, 0.6 miles from Sloane Square Underground Station and 0.7 miles from Battersea Park.

KEY FEATURES

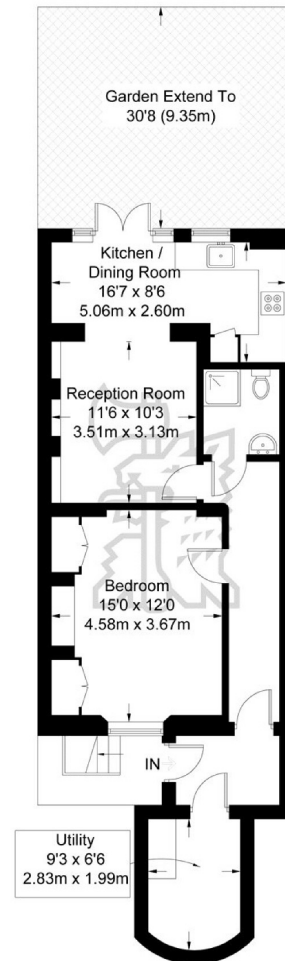
- Bedroom
- Shower Room
- Kitchen Reception
- Utility/Storage Vault
- Private Garden
- Tax Band: E





Alderney Street

Approximate Gross Internal Area = 666 sq ft / 61.9 sq m



Lower Ground Floor

Not to scale, for guidance only and must not be relied upon as a statement of fact.
All measurements and areas are approximate only and have been prepared in
accordance with the current edition of the RICS Code of Measuring Practice.

Energy Rating: C. We aim to make our particulars both accurate and reliable. However they are not guaranteed; nor do they form part of an offer or contract. If you require clarification on any points then please contact us, especially if you are travelling some distance to view. Please note that appliances and heating systems have not been tested and therefore no warranties can be given as to their good working order.

ASKING PRICE: £600 PER WEEK

PIMLICO

020 7828 4243

pimlicolettings@jackson-stops.com

jackson-stops.co.uk

JACKSON-STOPS