



ST. GEORGES SQUARE
PIMLICO

JACKSON-STOPS 

ST. GEORGES SQUARE PIMLICO, SW1V

ASKING PRICE: £750,000

A bright, recently refurbished, one-bedroom apartment is presented to the market in this handsome Grade II listed building in this garden square in Pimlico SW1.

With south westerly views looking across St Georges Square towards the River Thames this apartment is offered with no chain and in turnkey condition. The stunning open plan Snaidero kitchen is not only striking but also immensely practical. Given the completeness of the renovation, the property cleverly intermixes traditional elegance, with modern conveniences including integrated B & W ceiling speakers for a Sonos sound system, CAT-6 cabling throughout and underfloor heating in the shower room.

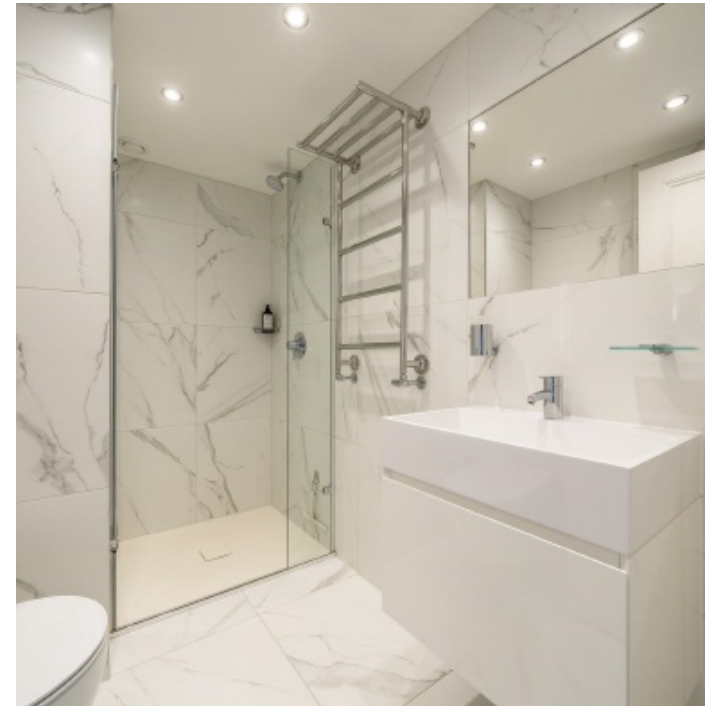
This would suit all those looking for a central London home, a well located pied-a-terre or indeed a downsize from a more substantial property.

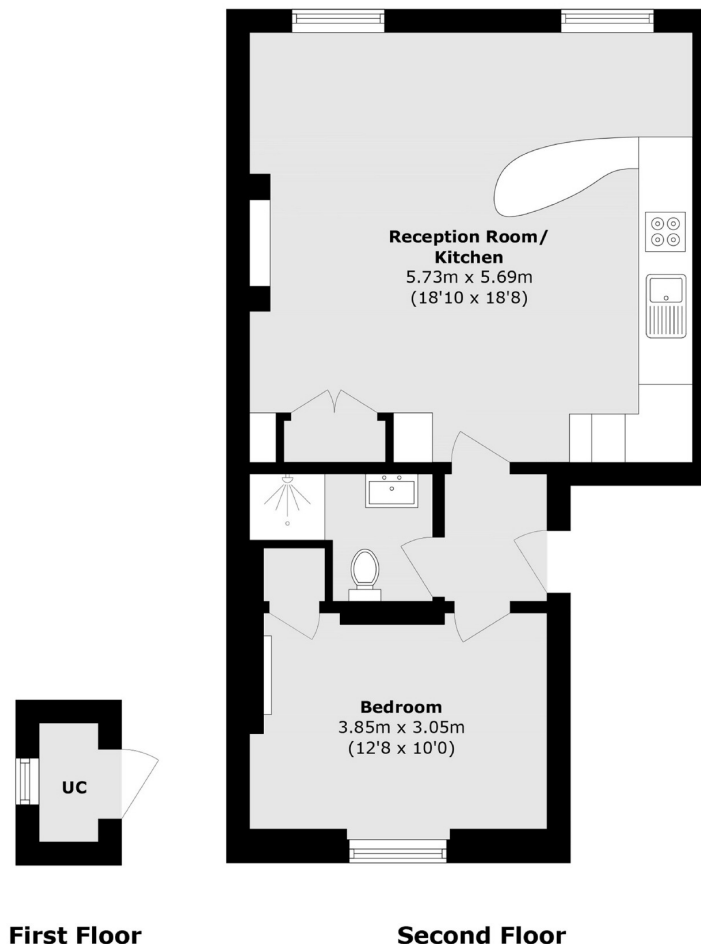
St George's Square, is located in Pimlico SW1 and is one of the most well regarded addresses the area has to offer. It is conveniently positioned for Pimlico Underground (0.2 miles), a short walk to Victoria Station (0.7 miles) and Battersea Park is less than a mile away.

KEY FEATURES

- Share Of Freehold
- Grade II Listed
- Recently Refurbished
- Sonos Sound System
- Service Charge: £2000 pa
- Sole Agent







First Floor

Second Floor

Total area (approx.): 51.7 sq. m (556.4 sq. ft)
(Including Utility Cupboard)

Energy Rating: C. We aim to make our particulars both accurate and reliable. However they are not guaranteed; nor do they form part of an offer or contract. If you require clarification on any points then please contact us, especially if you are travelling some distance to view. Please note that appliances and heating systems have not been tested and therefore no warranties can be given as to their good working order.

ASKING PRICE: £750,000

PIMLICO

020 7828 4050

pimlicosales@jackson-stops.com

jackson-stops.co.uk

JACKSON-STOPS

