



**THURLOE SQUARE**  
SOUTH KENSINGTON

**JACKSON-STOPS** 



# THURLOE SQUARE SOUTH KENSINGTON, SW7

ASKING PRICE: £5,850,000

A superb six double bedroom freehold family home is presented to the market in South Kensington, SW7, positioned on the prestigious south side of Thurloe Square.

This exceptional property offers direct views of the iconic Victoria and Albert Museum and benefits from access to the highly sought-after private garden square. Measuring in excess of 3,500 sq ft (excluding separate storage vaults), the home combines generous proportions with elegant design.

The principal entertaining areas are arranged across the ground and first floors, benefitting from traditionally high ceilings (c. 3m), excellent natural light throughout, and wonderful views over the square. These include a grand formal drawing room and a spacious dining room adjoined to the kitchen, comfortably seating ten guests.

The principal suite features an en-suite bathroom, dressing area, and sweeping views across Thurloe Square to the Victoria and Albert Museum. The top floor offers three further double bedrooms and a family bathroom. On the lower ground level, two additional en-suite bedrooms are complemented by an informal sitting room/ snug, illuminated by a conservatory-style roof, with direct access to a private rear garden.

## KEY FEATURES

- Six Double Bedrooms
- In Excess Of 3,500 Sqft
- Grade II Listed
- Access To Thurloe Square
- Private Rear Decked Garden
- Excellent Transport Links



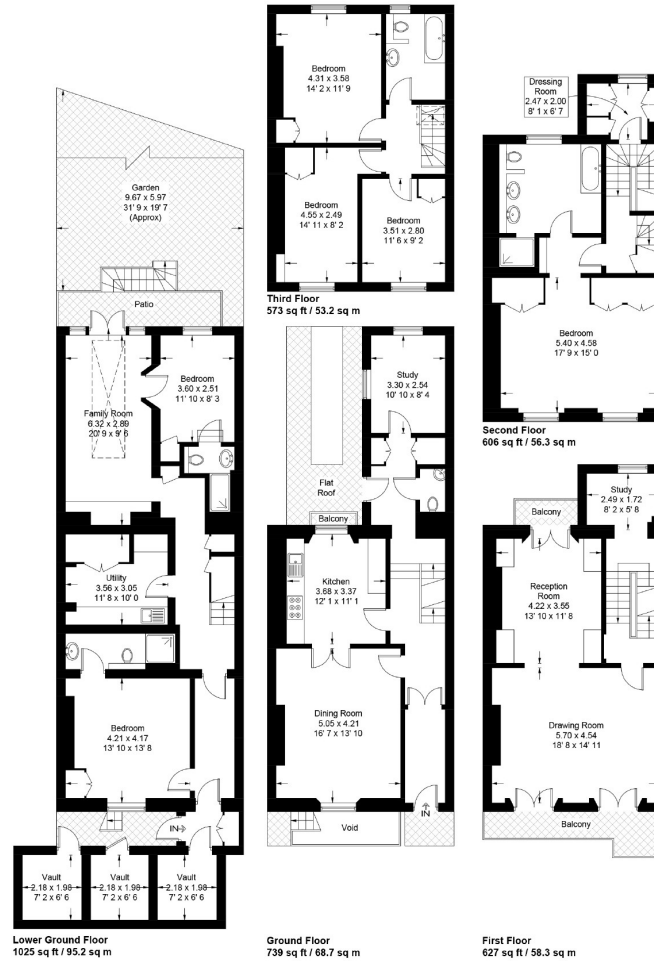






## Thurloe Square

Approximate Gross Internal Area = 3570 sq ft / 331.7 sq m  
(Excluding Vaults)



Not to scale, for guidance only and must not be relied upon as a statement of fact  
All measurements and areas are approximate only and have been prepared in  
accordance with the current edition of the RICS Code of Measuring Practice

Energy Rating: E. We aim to make our particulars both accurate and reliable. However they are not guaranteed; nor do they form part of an offer or contract. If you require clarification on any points then please contact us, especially if you are travelling some distance to view. Please note that appliances and heating systems have not been tested and therefore no warranties can be given as to their good working order.

**ASKING PRICE: £5,850,000**

**PIMLICO**

**020 7828 4050**

pimlicosales@jackson-stops.com

jackson-stops.co.uk

**JACKSON-STOPS**

