



ST. GEORGES DRIVE
PIMLICO

JACKSON-STOPS 

ST. GEORGES DRIVE PIMLICO, SW1V

ASKING PRICE: £650 PER WEEK

A two bedroom, lower ground floor, flat in the heart of Pimlico. Offering good living and entertaining space as well as a self contained studio for working purposes. Heating and hot water included in the rent.

0.4 miles from Pimlico Underground Station and 0.6 miles from Victoria Station.

KEY FEATURES

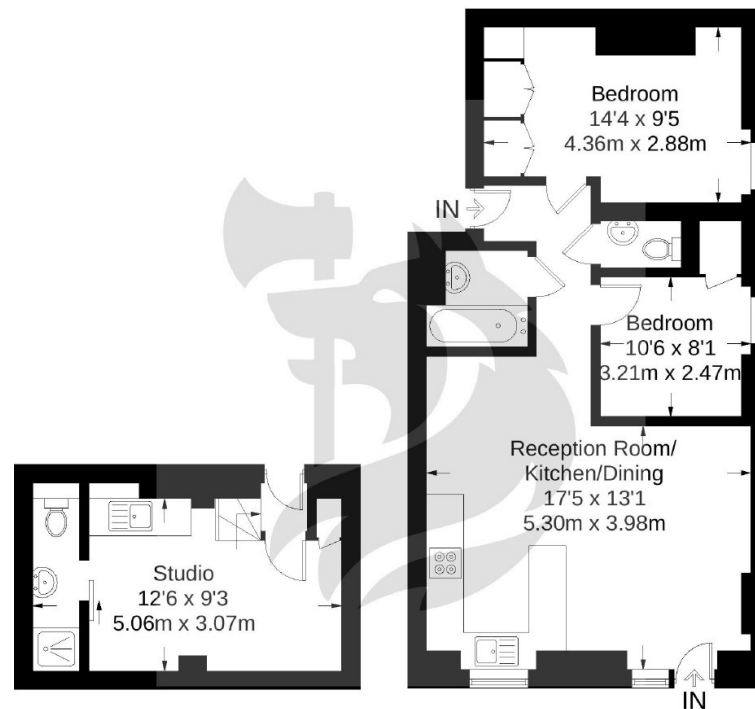
- Two Bedrooms
- Two Bathrooms
- Reception
- Kitchen
- Study





St. Georges Drive

Approximate Gross Internal Area = 734 sq ft / 68.2 sq m



Lower Ground Floor
168 sq ft / 15.6 sq m

Lower Ground Floor
566 sq ft / 52.6 sq m

Not to scale, for guidance only and must not be relied upon as a statement of fact.
All measurements and areas are approximate only and have been prepared in
accordance with the current edition of the RICS Code of Measuring Practice.

Energy Rating: E. We aim to make our particulars both accurate and reliable. However they are not guaranteed; nor do they form part of an offer or contract. If you require clarification on any points then please contact us, especially if you are travelling some distance to view. Please note that appliances and heating systems have not been tested and therefore no warranties can be given as to their good working order.

ASKING PRICE: £650 PER WEEK

PIMLICO

020 7828 4243

pimlicolettings@jackson-stops.com

jackson-stops.co.uk

JACKSON-STOPS