



**MARSHAM STREET**  
WESTMINSTER

**JACKSON-STOPS** 



---

## MARSHAM STREET WESTMINSTER, SW1P

ASKING PRICE: £5,000 PCM

A modern, split level, two bedroom flat in the heart of Westminster.

The property offers two double bedrooms, open-plan kitchen/dining/reception, two bathrooms and a guest WC. Benefiting from lots of natural light and wooden flooring in the reception and kitchen. Just 0.5 miles from Pimlico Underground Station, 0.7 miles from Victoria Station and 1 mile from Victoria Station.

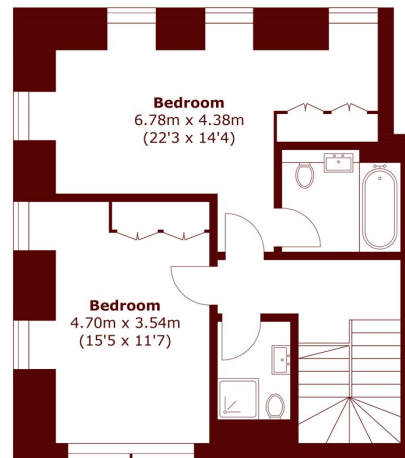


### KEY FEATURES

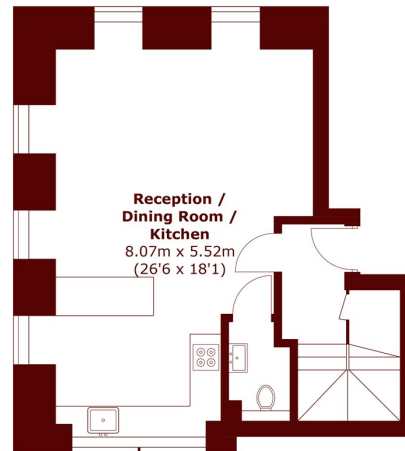
- Two Bedrooms
- Two Bathrooms
- Reception Room
- Kitchen
- Separate WC
- Tax Band: G







**First Floor**



**Ground Floor**

Total area (approx.): 98.2 sq. m (1,057.0 sq. ft)

Energy Rating: C. We aim to make our particulars both accurate and reliable. However they are not guaranteed; nor do they form part of an offer or contract. If you require clarification on any points then please contact us, especially if you are travelling some distance to view. Please note that appliances and heating systems have not been tested and therefore no warranties can be given as to their good working order.

**ASKING PRICE: £5,000 PCM**

**PIMLICO**

**020 7828 4243**

[pimlicolettings@jackson-stops.com](mailto:pimlicolettings@jackson-stops.com)

[jackson-stops.co.uk](http://jackson-stops.co.uk)

**JACKSON-STOPS** 