



ST. GEORGES DRIVE
PIMLICO

JACKSON-STOPS 

ST. GEORGES DRIVE PIMLICO, SW1V

ASKING PRICE: £600 PER WEEK

A beautifully presented two double bedroom raised ground floor property located in the heart of Pimlico. The flat boasts two good size double bedrooms with ample storage, a full modern bathroom, a bright and spacious living room with a well equipped fitted kitchen.

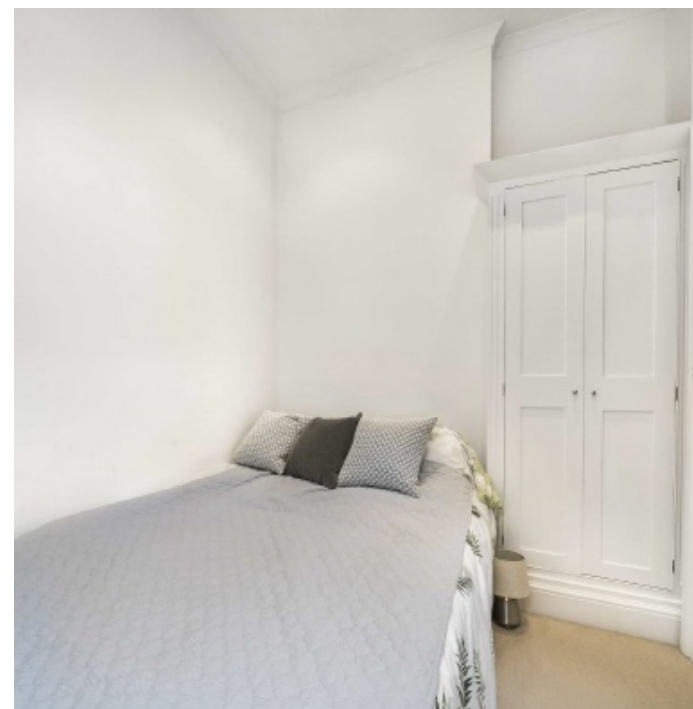
The flat also benefits from high ceilings, a mixture of carpet and wood flooring and is very nicely furnished throughout. The property is located 0.3m from Pimlico station (Victoria Line) and a 10 min walk to Victoria Coach and Train station (Victoria, Circle and District Lines)

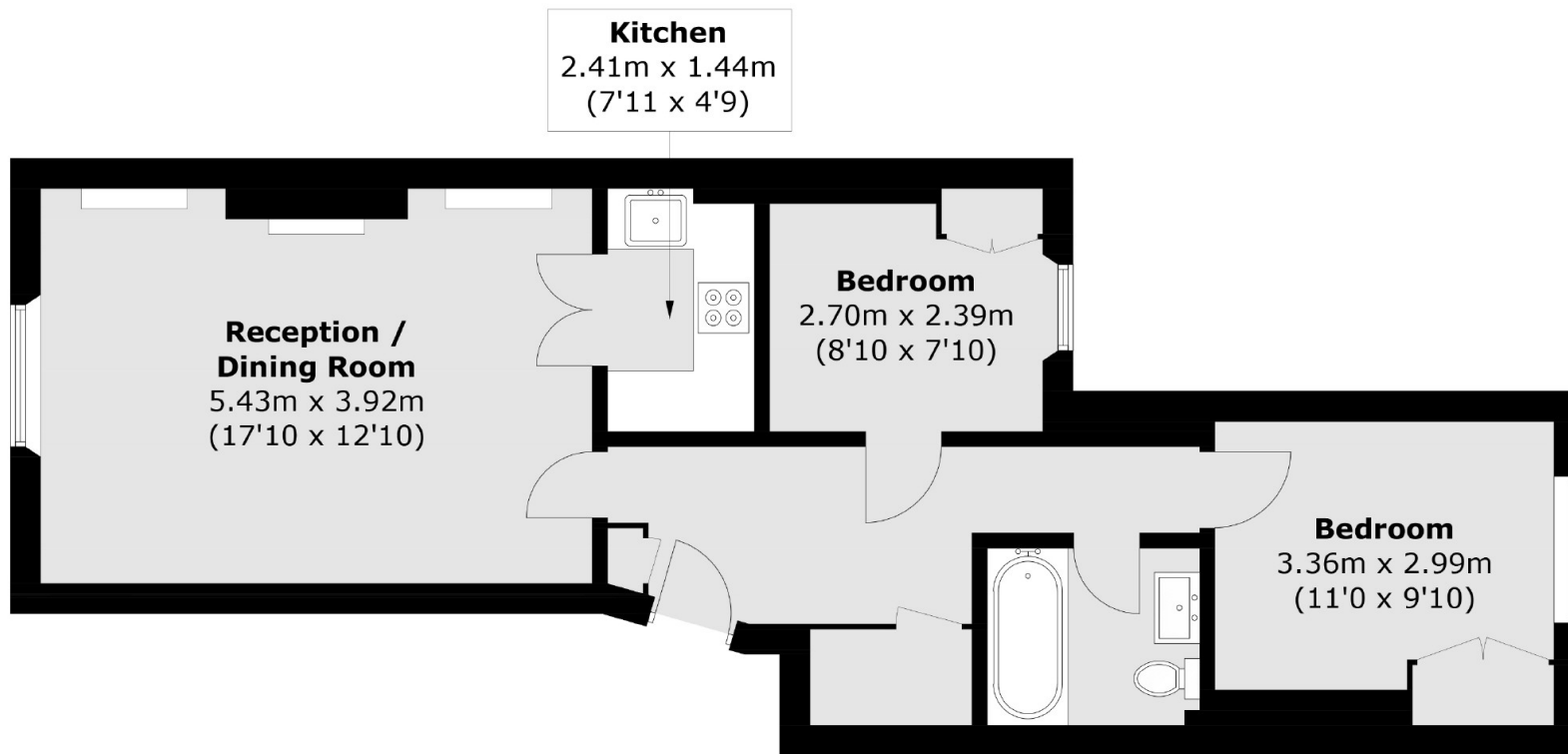
The UberBoat can be picked up less than 0.9m away at Millennium Millbank Pier giving a scenic route in and out of the city.

KEY FEATURES

- Two Double Bedrooms
- Modern Bathroom
- High Ceilings
- Bright Living Room
- Furnished
- Tax Band: F







Ground Floor

Total area (approx.): 57.3 sq. m (616.8 sq. ft)

Energy Rating: C. We aim to make our particulars both accurate and reliable. However they are not guaranteed; nor do they form part of an offer or contract. If you require clarification on any points then please contact us, especially if you are travelling some distance to view. Please note that appliances and heating systems have not been tested and therefore no warranties can be given as to their good working order.

ASKING PRICE: £600 PER WEEK

PIMLICO

020 7828 4243

pimlicolettings@jackson-stops.com

jackson-stops.co.uk

JACKSON-STOPS 